

KRAFT
Deckensysteme

KRAFT
Deckensysteme
Ukraine



KRAFT Deckensysteme Ukraine —
winner of the popular vote “Ukrainian
People’s Prize” in the nomination
“Suspended ceilings of the year”
2020–2021

2021/2022

SYSTEM AND DESIGN
FALSE CEILING SOLUTIONS





Content

About the company



Our clients and objects



T-shaped profiles



Lighting system KRAFT LED



Classic grilyato



Pyramidal grilyato



Grilyato GLK: 15/15 and 15/10



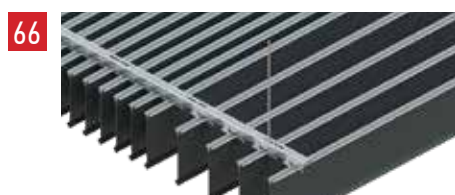
Grilyato louvers



Cuboid rail



Lamellar rail blinds (screen ceiling)



Metal cassettes



Design solutions



Comparative characteristics of the main types of KRAFT suspended ceilings*



	False ceiling type	Installation speed	Ease of access to the ceiling space	Preservation of appearance during operation	Ceiling transparency (smoke evacuation in case of fire)	Acoustics	Design possibilities	Use for walls	Outdoor use
1	T-profile with mineral plate	■■■■■	■■■■■	■■■■■	■■■■■	■■■■■	■■■■■	■■■■■	■■■■■
2	T-profile with acoustic plate	■■■■■	■■■■■	■■■■■	■■■■■	■■■■■	■■■■■	■■■■■	■■■■■
3	T-profile with metal plate	■■■■■	■■■■■	■■■■■	■■■■■	■■■■■	■■■■■	■■■■■	■■■■■
4	Classic grilyato	■■■■■	■■■■■	■■■■■	■■■■■	■■■■■	■■■■■	■■■■■	■■■■■
5	Pyramidal grilyato	■■■■■	■■■■■	■■■■■	■■■■■	■■■■■	■■■■■	■■■■■	■■■■■
6	Grilyato GLK 15/15 (cassette)	■■■■■	■■■■■	■■■■■	■■■■■	■■■■■	■■■■■	■■■■■	■■■■■
7	Grilyato GLK 15/10 (cassette)	■■■■■	■■■■■	■■■■■	■■■■■	■■■■■	■■■■■	■■■■■	■■■■■
8	Cuboid rail	■■■■■	■■■■■	■■■■■	■■■■■	■■■■■	■■■■■	■■■■■	■■■■■
9	Plate rail (screen ceiling)	■■■■■	■■■■■	■■■■■	■■■■■	■■■■■	■■■■■	■■■■■	■■■■■

* This comparison is for informational purposes only. When choosing the right product, study its characteristics in more depth.

About the company



KRAFT Deckensysteme Ukraine is a young manufacturing company. And we are proud that in a short period of time, the company has achieved recognition both in Ukraine and abroad.

In 2011, we launched the first line in Ukraine for the production of T-profiles for suspended ceiling systems. As of the end of 2020, we are already producing over 45 different products and modifications.

KRAFT — LEADING MANUFACTURER OF FALSE CEILINGS IN UKRAINE

Our products are in deserved demand because:

- We use proven raw materials and reliable equipment — after all, this is a guarantee of product quality and safety.
 - We follow current trends in the ceiling systems market and constantly introduce new products and innovations.
 - We offer not just individual products — we offer ready-made professional solutions for ceiling systems.
 - All products manufactured undergo quality control at all stages of production, as well as certification in Ukraine and the European Union (EU).
 - We are constantly expanding the range of our products, thanks to which our customers have a choice.
- If you decide to install a suspended ceiling in an office, shopping center or other premises, then we will make your choice easy, and the result is predictably flawless.

Why are we the best?

KRAFT — suspended ceilings No. 1 in Ukraine*
The Ukrainian People's Prize competition was founded in 2013. Since then, Ukrainians have been able to directly participate in the assessment of goods and services presented on the Ukrainian market.

According to the voting results, KRAFT Deckensysteme Ukraine took 1st place in the nomination "Suspended ceilings of the year" 2020–2021 and thus confirmed its leading position in the market of suspended ceilings in Ukraine.



* Based on the results of the competition "Ukrainian People's Prize" 2020 and 2021



Export

We export our products to more than 20 countries of the CIS, Europe, Africa.



Distributors

More than 70 distributors in Ukraine, Epicenter supermarket chain, representatives in Georgia, Uzbekistan, EU countries.



Raw materials from manufacturers

We purchase raw materials for production directly from manufacturers.



Our objects

Our products are used annually at more than 1500 construction sites in Ukraine and abroad.



Engineering bureau

The engineering bureau is engaged in the development of new solutions and the improvement of products.



Warehouse program

The most popular models of T-profiles KRAFT Nova and KRAFT Fortis are always available in stock.



Design department

The KRAFT design department monitors current market trends and translates them into design solutions.



Logistics

Own fleet of vehicles and well-established logistics solutions for Ukraine and foreign countries.



Production and warehouse

The total area of production and storage facilities of the KRAFT company is more than 7000 m².



Staff

The total number of KRAFT employees is more than 150 people.



Certification

All KRAFT products undergo technical tests and certification in Ukraine and the EU.



Product range

We produce more than 45 kinds and modifications of suspended ceilings. The range is constantly expanding.



Our clients and objects

Grocery store chains



Building store chains



Gas station networks



Shopping centers



As well as companies such as:



Mc Donalds



Borispol airport



Cinema City



Port City Mall



City Center Mall



Shop "Furshet"



Smart Plaza Mall



Smart Plaza Mall



Shopping mall "Karavan"



Shopping mall "Karavan"



"Epicenter" Food Market



"Epicenter" Food Market



"ATB"



"ATB"



Airport "Zaporizhzhia"



Dustlik 2 metro station, Tashkent



Shopping center "Epicenter"



Shopping center "Epicenter"



Shopping center Spartak



Shopping center Spartak



ALMA



ALMA



Private school, Tbilisi



Private school, Tashkent

T-shaped profiles KRAFT



The construction with T-shaped profiles is easily assembled by hand and fixed to the ceiling on special hangers. After that, plates (plasterboard, mineral, metal, glass, mirror, wood, etc.) or metal cassettes of grilyato GLK are inserted into the assembled cells of the profile.

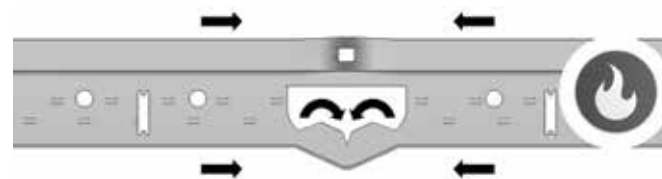
KRAFT Deckensysteme Ukraine produces four models of profiles: NOVA, FORTIS, HD and RH100. The width of the visible part of the profile can be 24 mm (standard) or 15 mm (thin). Among themselves, the models differ in performance and cost. All models are fully compatible with each other.

All KRAFT profiles have additional stiffening ribs, which provides additional strength under loads. Also, all main guides are equipped with a fire compensator. The original design of the KRAFT profile locks allows you to disconnect the profiles without breaking the lock. Therefore, if necessary, the structure can be disassembled and reassembled. NOVA and FORTIS profiles are always in stock. The rest of the products are made to order.

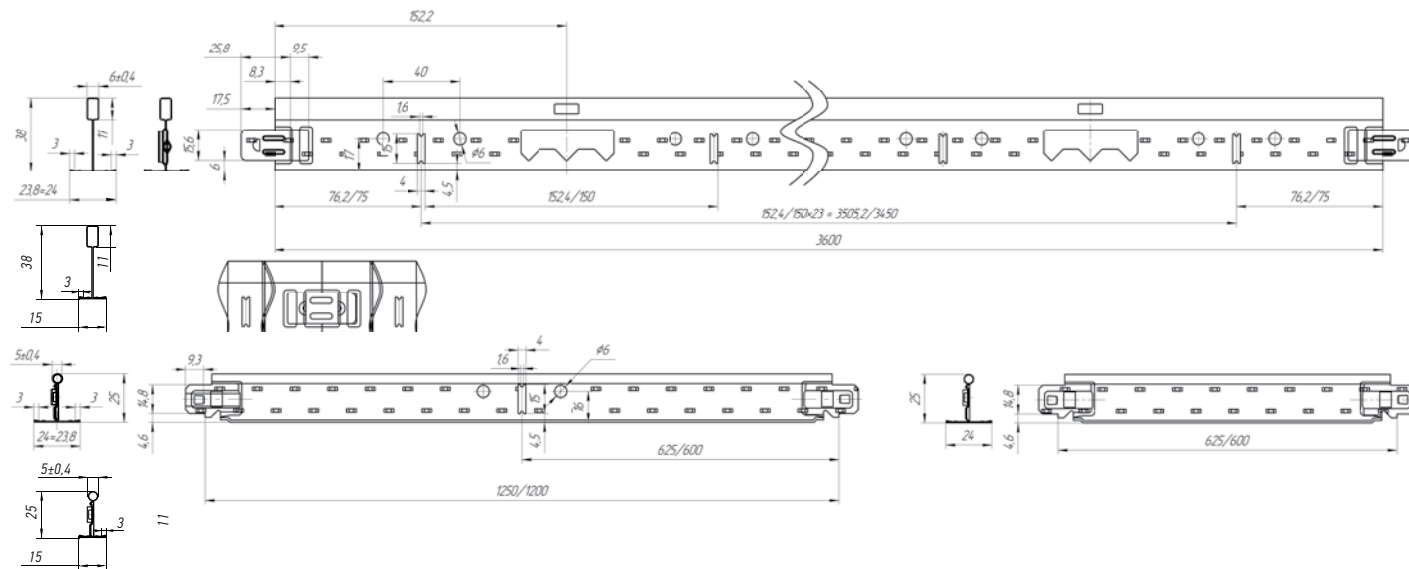


The scheme of work of the fire compensator

A special cutout compensates for the thermal expansion of the metal in the event of a fire and prevents the ceiling from collapsing.



Main dimensions of profiles



T-profile KRAFT NOVA



* Maximum load with standard installation

Colors	<input type="checkbox"/> RAL 9003	Availability	in stock
Width	24 mm	Warranty, years	3
Load*	5 kg/m²	Anti-corrosion coating	✗
European standard	EN 13964:2004+A1:2006	Fire compensator	✓
Material	galvanized steel with polymer coating		
Fire safety	class A1		

T-profile KRAFT FORTIS



* Maximum load with standard installation

Colors	<input type="checkbox"/> RAL 9003, <input type="checkbox"/> RAL 9005, <input type="checkbox"/> RAL 9006, <input type="checkbox"/> RAL 7024, <input type="checkbox"/> RAL 8017, <input type="checkbox"/> Any RAL, <input type="checkbox"/> Wood	Availability	under the order
Width	24 mm, 15 mm	Warranty, years	3
Load*	7 kg/m²	Anti-corrosion coating	✗
European standard	EN 13964:2004+A1:2006	Fire compensator	✓
Material	galvanized steel with polymer coating		
Fire safety	class A1		

T-profile KRAFT HD



* Maximum load with standard installation

Colors	<input type="checkbox"/> RAL 9003, <input type="checkbox"/> RAL 9005, <input type="checkbox"/> RAL 9006, <input type="checkbox"/> RAL 7024, <input type="checkbox"/> RAL 8017, <input type="checkbox"/> Any RAL, <input type="checkbox"/> Wood	Availability	under the order
Width	24 mm, 15 mm	Warranty, years	3
Load*	12 kg/m²	Anti-corrosion coating	✗
European standard	EN 13964:2004+A1:2006	Fire compensator	✓
Material	galvanized steel with polymer coating		
Fire safety	class A1		

T-profile KRAFT RH100

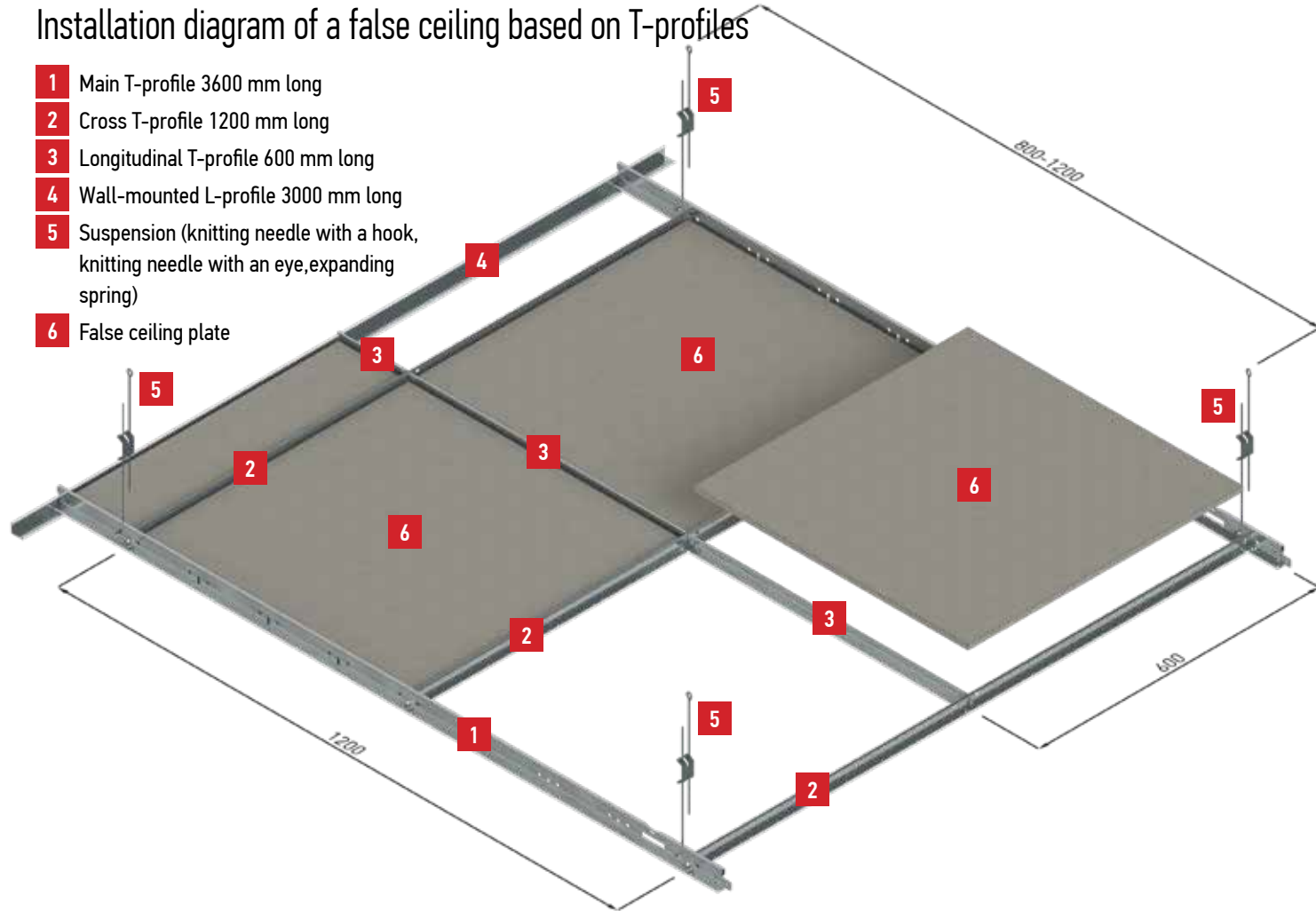


* Maximum load with standard installation

Colors	<input type="checkbox"/> RAL 9003, <input type="checkbox"/> RAL 9005, <input type="checkbox"/> RAL 9006, <input type="checkbox"/> RAL 7024, <input type="checkbox"/> RAL 8017, <input type="checkbox"/> Any RAL, <input type="checkbox"/> Wood	Availability	under the order
Width	24 mm, 15 mm	Warranty, years	3
Load*	7 kg/m²	Anti-corrosion coating	✓
European standard	EN 13964:2004+A1:2006	Fire compensator	✓
Material	galvanized steel with polymer coating		
Fire safety	class A1		

Installation diagram of a false ceiling based on T-profiles

- 1 Main T-profile 3600 mm long
- 2 Cross T-profile 1200 mm long
- 3 Longitudinal T-profile 600 mm long
- 4 Wall-mounted L-profile 3000 mm long
- 5 Suspension (knitting needle with a hook, knitting needle with an eye, expanding spring)
- 6 False ceiling plate



Installation procedure for suspended ceilings based on T-profiles

1. We mark the level at which the suspended ceiling will be located.
2. Mount the wall L-profile (4) along the perimeter at the marking level.
3. Using dowels, we attach the hangers (5) to the main ceiling.
4. Install the main T-profiles 3600 mm and align them in the same plane.
5. We install transverse T-profiles of 1200 mm in the locks of the main and longitudinal T-profile of 600 mm in the locks of the transverse.
6. We install ceiling tiles or GLK gilyato cassettes into the finished frame.

Tips for installing a false ceiling based on T-profiles

- ① The T-profile is designed to carry the load of the plates. Additional load in the form of voltage transformers, lamps, ventilation grilles, etc. should be provided with separate unloading systems.
- ② According to European standards, a luminaire weighing more than 250 g must be mounted on a suspension separate from the T-profiles. This rule does not apply to KRAFT LED luminaires, which can be installed directly on a T-profile frame without using separate suspensions.
- ③ We recommend using only metal dowels for attaching the hangers. The distance between the hangers should not exceed 800-1200 mm. Understanding and adhering to these rules will save you from unnecessary problems when installing and maintaining the ceiling.



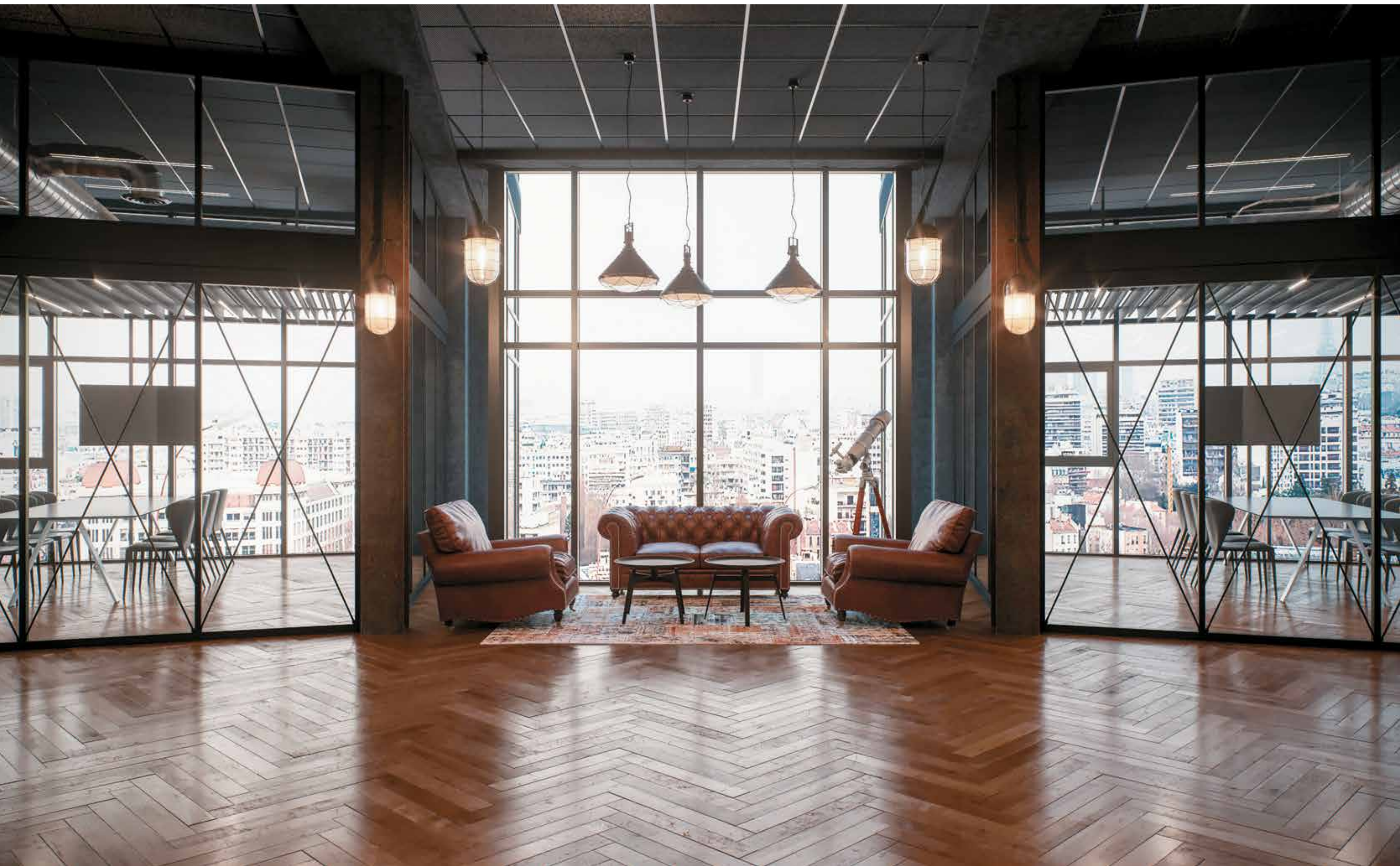
Installation diagrams of a false ceiling based on T-profiles

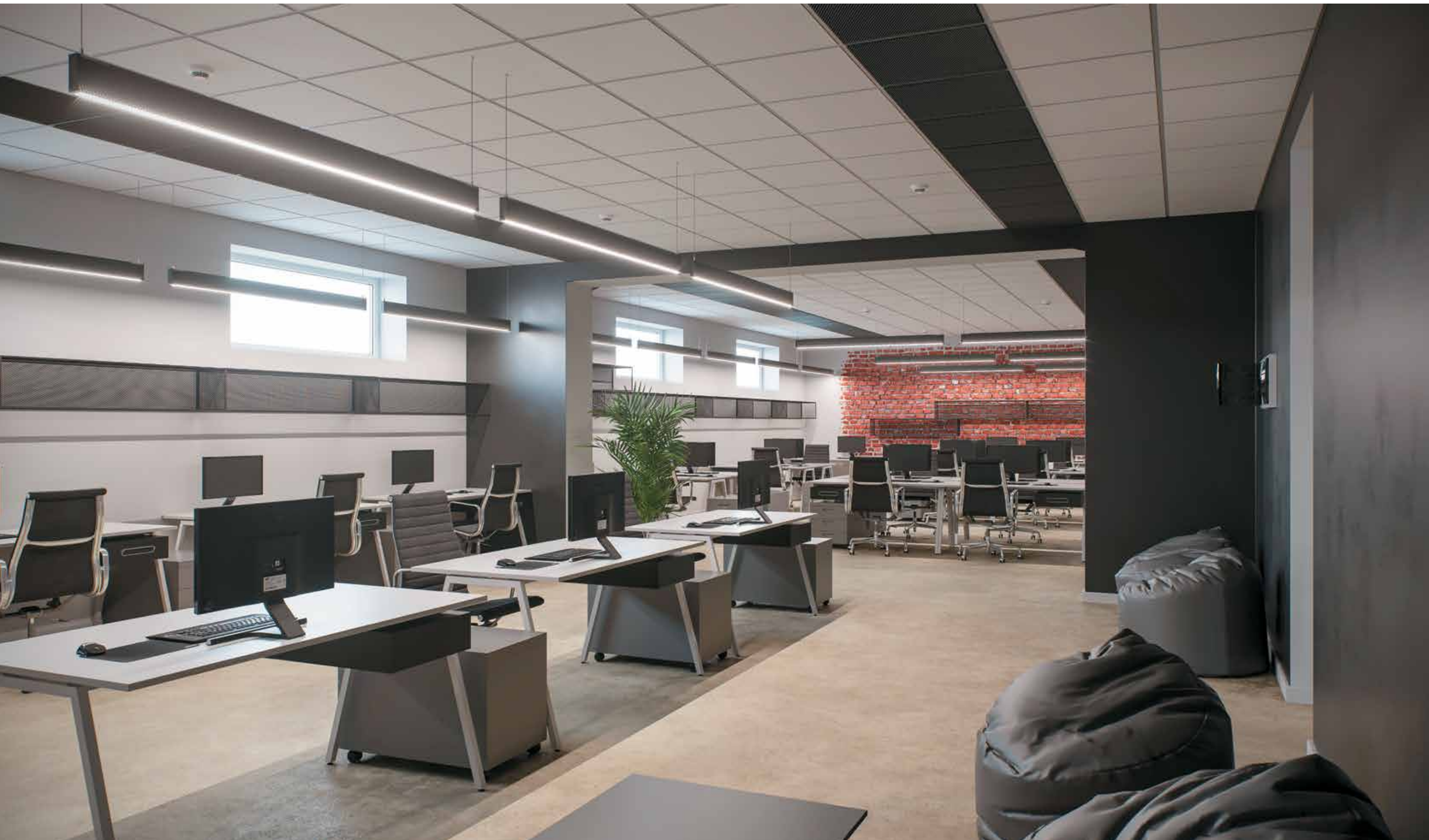
- Main T-profile (1) 3600 mm
- Cross T-profile (2) 1200 mm
- Longitudinal T-profile (3) 600 mm

Installation diagram	Dimensions plate (mm)	Additional suspensions	Bearing capacity
1	600x600	✗	
2	600x600	✓	
3	600x600	✓	
4	1200x600	✗	
5	1200x600	✗	
6	1200x600	✗	
7	1200x1200	✗	
8	1200x1200	✗	

Calculation of components for 1 m² of suspended ceiling based on T-profiles

Scheme No.	T-profile, pcs.			Suspension, pcs.	Wall-mounted L-profile, pcs.
	3600 mm	1200 mm	600 mm	step 1200 mm	3000 mm
1	0,232	1,4	1,4	0,7	≈ 0,216 An accurate calculation of the wall L-profile is recommended if you know the perimeter of the room
2	0,464	-	2,8	1,4	
3					
4	0,232	1,4	-	0,7	
5	0,464	-	1,4	1,4	
6	0,232	0,7	-	0,7	
7					
8					







Lighting system KRAFT LED



The innovative KRAFT LED luminaires have been created specifically for suspended ceilings. One of the features of KRAFT LED luminaires is that they can be used for all types of suspended ceilings, as well as for modernizing the lighting system in existing rooms.



Lighting Comparison Chart

Lighting type	Power, W	Luminous efficiency, Lm/W	Luminous flux, Lm
Fluorescent Lamp	80	45	3600
LED lamp	36	75	2700
KRAFT LED 24 mm	27,2	103	2812



System advantages lighting KRAFT Led

- No separate hangers required
- Can be installed anywhere in the false ceiling
- Do not require service
- Install and forget about it. Life time up to 50,000 hours
- 3-year warranty
- Security: no mercury and UV radiation
- Payback period up to 1 year (due to energy savings)

Lighting system KRAFT LED specifications*

Specifications	KRAFT Led		Specifications	KRAFT Led	
	15 mm	24 mm		15 mm	24 mm
Body	metal		Input range stresses	200–240 V, 50/60 Hz	
Safety glass	lighting acrylic Samsung		Withstands input voltage fluctuations	up to 300 V	
Does not contain harmful substances according to RoHS	✓		Output current stabilization	✓	
LEDs	SMD 2835-12C7B		Ripple factor	less 1%	
LED quantity	2x84 psc.		Short circuit and overvoltage protection	✓	
Colour temperature	4633 K	4637 K	Fully insulated housing IP20	✓	
Light flow	2565 Lm	2812 Lm	Power factor, cos φ	0,98	0,94
Color rendering index, Ra	83,4	83,8	Efficiency	89%	91%
Luminous efficiency	93,3 Lm/W	103,4 Lm/W	Electrical safety class	II	
Scattering angle	120°				
Power	27,5 W	27,2 W			

* Specifications are indicated for a set of luminaires 1x1200 mm, or 2x600 mm. For the remaining lengths of the luminaires, the characteristics are calculated proportionally



Types of KRAFT LED luminaires

The KRAFT Led lighting system conventionally consists of two parts — a light source (lamp) and its fixing. Luminaires in all systems have almost identical characteristics. And depending on the type of suspended ceiling, we offer three types of mounting: T-Led, G-Led and K-Led.

	Base and fastening	Width	Length	Power of 1 set of lighting		Approximate lighting area 1 set
				2x600	27,5 W	
T-Led	Instead of the standard T-profile	15 mm	600 mm	1x1200	27,2 W	5–7 m ²
		24 mm	1200 mm	2x600	27,5 W	7–10 m ²
G-Led	On a double-sided tape	15 mm	600 mm	1x1200	27,2 W	5–7 m ²
		24 mm	1200 mm	2x600	27,5 W	7–10 m ²
K-Led	Complete luminaires based on 35x65 mm or 35x105 mm cube rail	24 mm	1200 mm	1x1200	27,5 W	7–10 m ²
			2400 mm	1x2400	55,0 W	14–20 m ²



- 1 T-LED on the T-15 profile
- 2 T-LED on the T-24 profile



- 3 G-LED 24 mm wide on a rail
- 4 G-LED 15 mm wide on grilyato



- 5 K-LED: luminaire width 24 mm, rail width 35 mm

System features KRAFT T-LED

In the KRAFT T-Led lighting system, the KRAFT Fortis T-profiles with a width of 15 or 24 mm are used as supporting elements of the luminaire. Profiles with a semicircular diffuser are used with the T-24 system (width 24 mm). Profiles with a rectangular diffuser are intended for use with the T-15 system (width 15 mm). During installation, instead of the usual T-profile, the KRAFT T-Led LED profile is installed in the desired place on the ceiling.

System features KRAFT G-LED

KRAFT G-Led luminaires are also available in widths of 15 mm (rectangular diffuser) or 24 mm (semicircular diffuser). They are attached directly to the rail or grilyato profiles using reinforced double-sided tape (included). It should be borne in mind that before fastening, it is necessary to drill holes for the output of the wires.

System features KRAFT K-LED

This system is a full-fledged luminaire based on the KRAFT Cube cuboid rail. In this case, the luminaire driver is hidden inside the rail. Thanks to the new type of fastening, such luminaires can be mounted either directly to the ceiling or on any suspensions, including those on their own wires. You can choose any color of the lamp according to the RAL scale, as well as the texture of wood, metal, stone.

Application of KRAFT LED luminaires with various types of ceilings

	T-profile with acoustic panels	Cuboid rail	Plate rail	Classical grilyato	Pyramidal grilyato	Grilyato GLK (cassette)
T-Led	✓	✗	✗	✗	✗	✓
G-Led	✗	✓	✓	✓	✓	✓
K-Led	✓	✓	✓	✓	✓	✓

Analysis of test reports of LED-panel and LED profile KRAFT T-LED 24 mm



The KRAFT company has ordered tests of the KRAFT T-LED LED profile and the popular model of LED panels. The tests were carried out by the "Research Center for Testing Electric Lamps and Technological Equipment of the State Enterprise "Poltavastandartmetrologiya". The test results can be checked by the test report number.

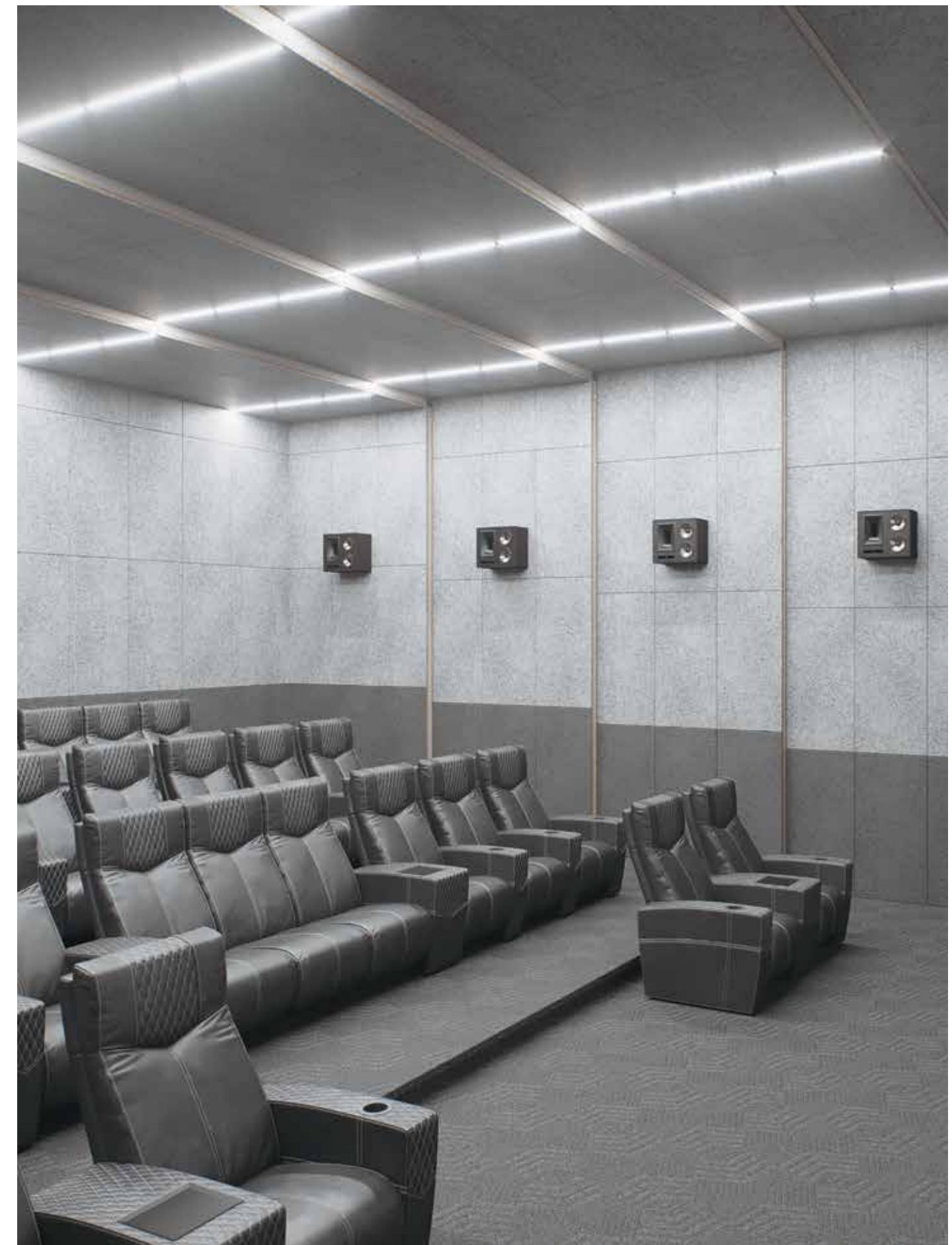
Below we compare the test results by the main parameters and simulate the calculation of lighting for a shopping center with an area of 1000 m² (room dimensions are approximately 32x32 m).

Test reports: 10.1-5880 (KRAFT T-LED), 10.1-4766 (LED-panel).

Indicators	KRAFT T-LED	LED panel	Calculations and explanations
1. Rated Power, W	27,2 ▲	▼ 36,6	Rated power of the appliance. Calculation of apparent power taking into account active and reactive electricity, see paragraph 8
2. Current strength, A	0,131 ▲	▼ 0,311	The current strength is used to calculate the apparent power, taking into account active and reactive electricity, see paragraph 8
3. Power factor, cos φ	0,94 ▲	▼ 0,53	Active power is spent on doing useful work. Reactive electricity is the part of the total power that is not consumed for useful work. The closer the cos φ value is to 1, the better.
4. Luminous flux, lm	2812 ▲	▼ 2064	The more luminous flux, the more light the lamp emits.
5. Light output, lm / W	103,4 ▲	▼ 56,4	Luminous efficiency is the ratio of the luminous flux emitted by the source to the power consumed by it. It is an indicator of the efficiency and economy of light sources.
6. Color temperature, K	4637	7101	Color temperature, determines the hue of the light. Three shades are most often distinguished: warm (≈2700-3000 K), neutral or white (≈4100 K) and cold (≈6500 K).
7. Index color rendering, Ra	83,8 ▲	▼ 73,7	The higher the Ra, the more natural and natural the illuminated objects will look. Maximum Ra = 100 (sun). Ra from 70 to 79 is good. Ra from 80 to 89 is very good.
8. Full power taking into account the power factor cos φ, VA	28,82 ▲	▼ 68,4	The total power of the luminaire is calculated by the formula: $P = UI,$ where P — apparent power (W), U — voltage (V), I — current strength (A). The voltage during the tests was 220 V. We substitute the current strength from paragraph 2. For KRAFT LED: $P = 220 \times 0,131 = 28,82$ For LED panel: $P = 220 \times 0,311 = 68,4$
9. Warranty, years	3 ▲	▼ 2	The warranty period for KRAFT LED is one and a half times longer.







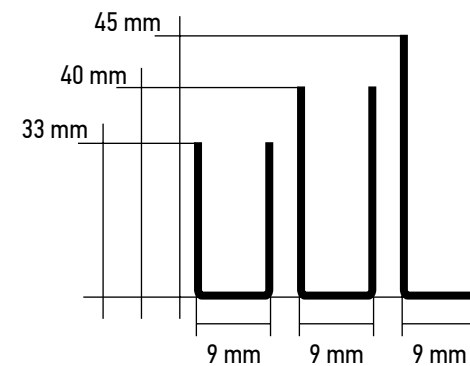
Classic grilyato



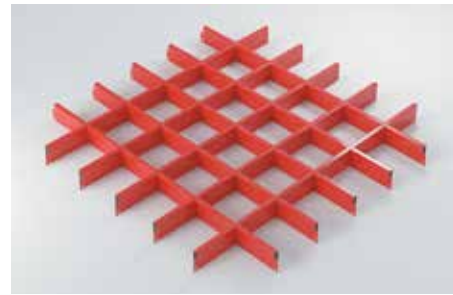
In addition to its spectacular appearance, grilyato also has practical advantages. The lattice structure of the suspended ceiling can save lives in the event of a fire. The classic grilyato only looks monolithic, but is transparent to remove smoke. The transparency of such a ceiling is over 60%. Not every suspension system is capable of creating a ceiling effect and at the same time being open to remove smoke and combustion products.

The KRAFT classic grilyato suspended ceiling is made of polymer-coated galvanized steel, which is a classic building material for a classic product.

Given the large number of possible configurations, the classic grilyato is made to order.



General characteristics



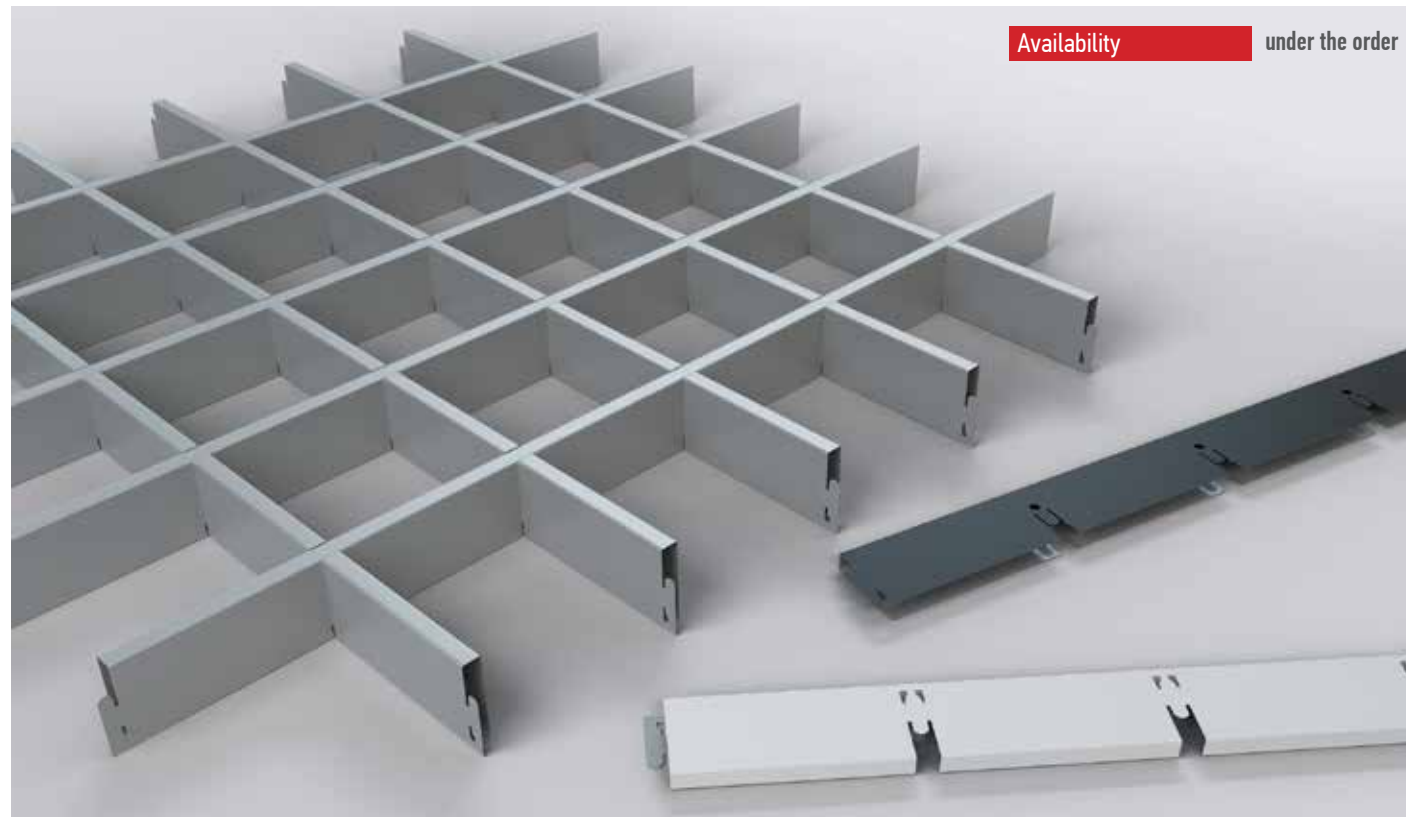
Colors RAL 9003 RAL 9005 RAL 9006 RAL 7024 RAL 8017 Any RAL Wood

Profile width \rightarrow 9 mm \leftarrow **Profile height** U \updownarrow 33 mm, 40 mm, 45 mm

Cell dimensions, mm 50x50, 60x60, 75x75, 86x86, 100x100, 120x120, 150x150, 200x200

Material galvanized steel with polymer coating

Fire safety class A1 **Warranty, years** 3



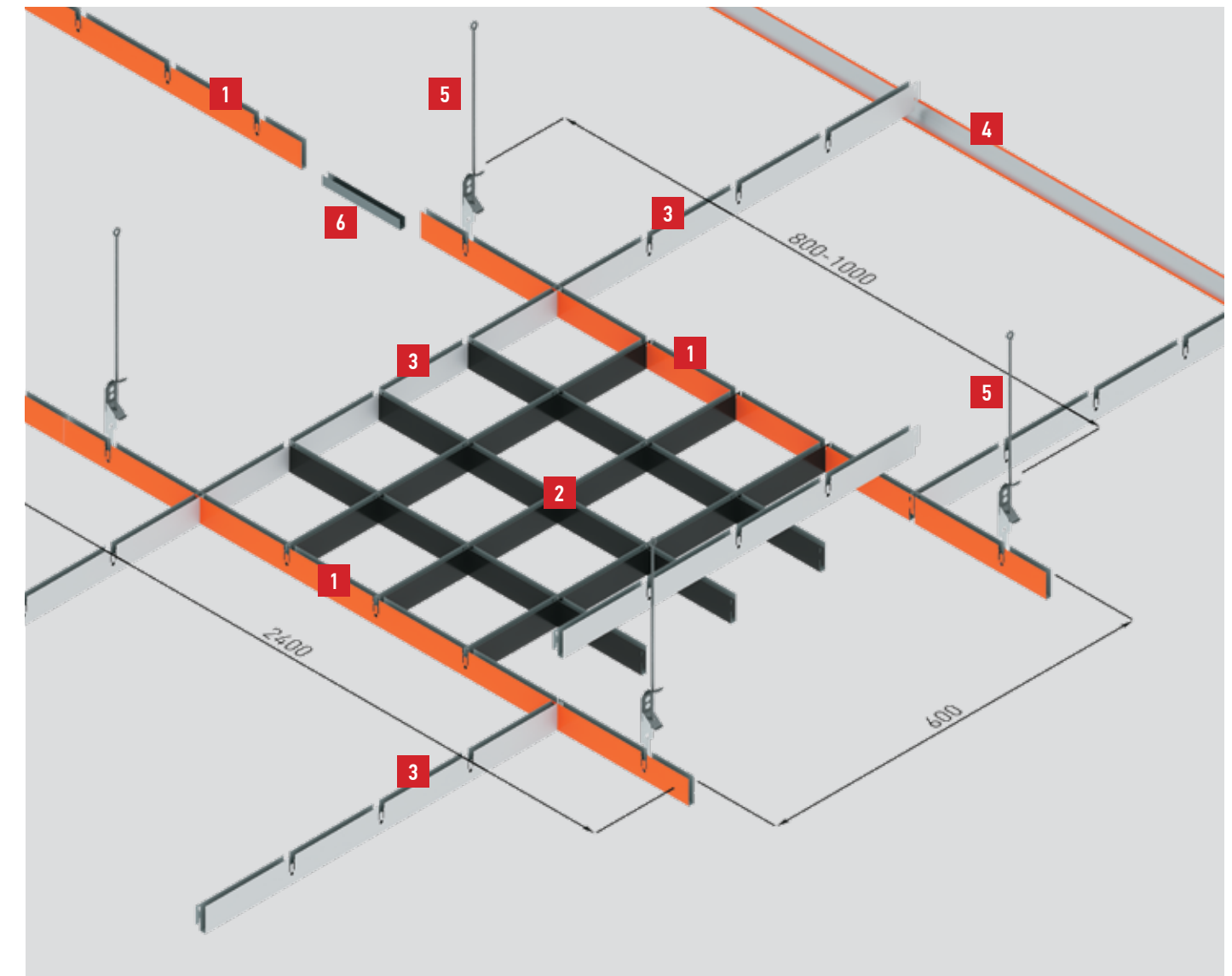
Availability under the order

Calculation of components for 1 m² of a ceiling from a classic grilyato

Name	Units	50x50	60x60	75x75	86x86	100x100	120x120	150x150	200x200
Grilyato module 600x600 mm	pcs	2,78	2,78	2,78	2,78	2,78	2,78	2,78	2,78
Bottom profile 600 mm	pcs	30,58	25,02	19,46	16,68	13,9	11,12	8,34	5,56
Top profile 600 mm	pcs	30,58	25,02	19,46	16,68	13,9	11,12	8,34	5,56
Main profile grilyato 2400 mm	pcs	0,7	0,7	0,7	0,7	0,7	0,7	0,7	0,7
Longitudinal profile grilyato 600 mm	pcs	2,78	2,78	2,78	2,78	2,78	2,78	2,78	2,78
Connecting element	pcs	0,7	0,7	0,7	0,7	0,7	0,7	0,7	0,7
Grilyato hanger, step 1000 mm	set	1,68	1,68	1,68	1,68	1,68	1,68	1,68	1,68
Wall-mounted L-profile 3000 mm	pcs	≈ 0,216 An accurate calculation of the wall L-profile is recommended if you know the perimeter of the room							



Installation diagram of the classic grilyato



- 1** Grilyato main profile 2400 mm long
- 2** Grilyato module (consists of lower and top profiles with a length of 600 mm)
- 3** Grilyato longitudinal profile, length 600 mm
- 4** Wall-mounted L-profile, length 3000 mm
- 5** Grilyato suspension
- 6** Connecting piece for basic profiles with a length of 2400 mm

Useful tips for the installation of a classic grilyato

- ⓘ Only metal dowels should be used for attaching the hangers. Do not use plastic dowels.
- ⓘ The distance between the main grilyato profiles of 2400 mm is 600 mm.
- ⓘ Recommended distance between hangers is 800 mm. The maximum distance between hangers is 1000 mm.
- ⓘ Any lamps, except for KRAFT G-Led, must have separate suspensions.
- ⓘ Any additional utilities should have separate ceiling mounts.
- ⓘ The installation of any grilyato should be given to trusted specialists.



Pyramidal grilyato

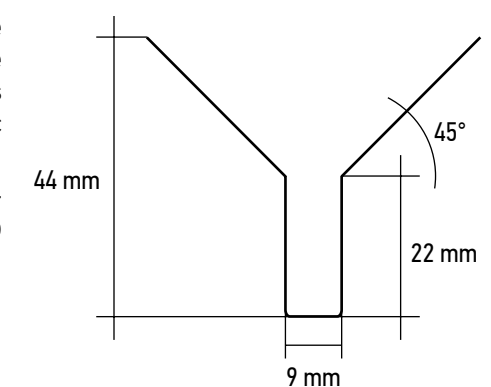


The architecture is based on the art of using simple geometric shapes such as a circle, rhombus, square, etc. The pyramid also belongs to the classics. The Egyptian pyramids still amaze and excite people.

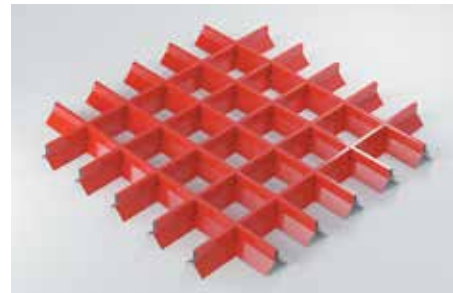
The KRAFT company offers grilyato suspended ceilings in the form of an inverted pyramid. This system is assembled according to the classic grilyato ceiling pattern.

The pyramidal modification allows you to hide utilities as much as possible. Using the same grid size, this type of suspended ceiling covers up to 90% more ceiling space than the classic grilyato.

Considering the large number of possible configurations, the pyramidal grilyato is made to order.



General characteristics



Colors			
Profile width	9 mm	Profile height	44 mm
Cell dimensions, mm	75x75, 86x86, 100x100, 120x120, 150x150, 200x200		
Material	galvanized steel with polymer coating		
Fire safety	class A1	Warranty, years	3



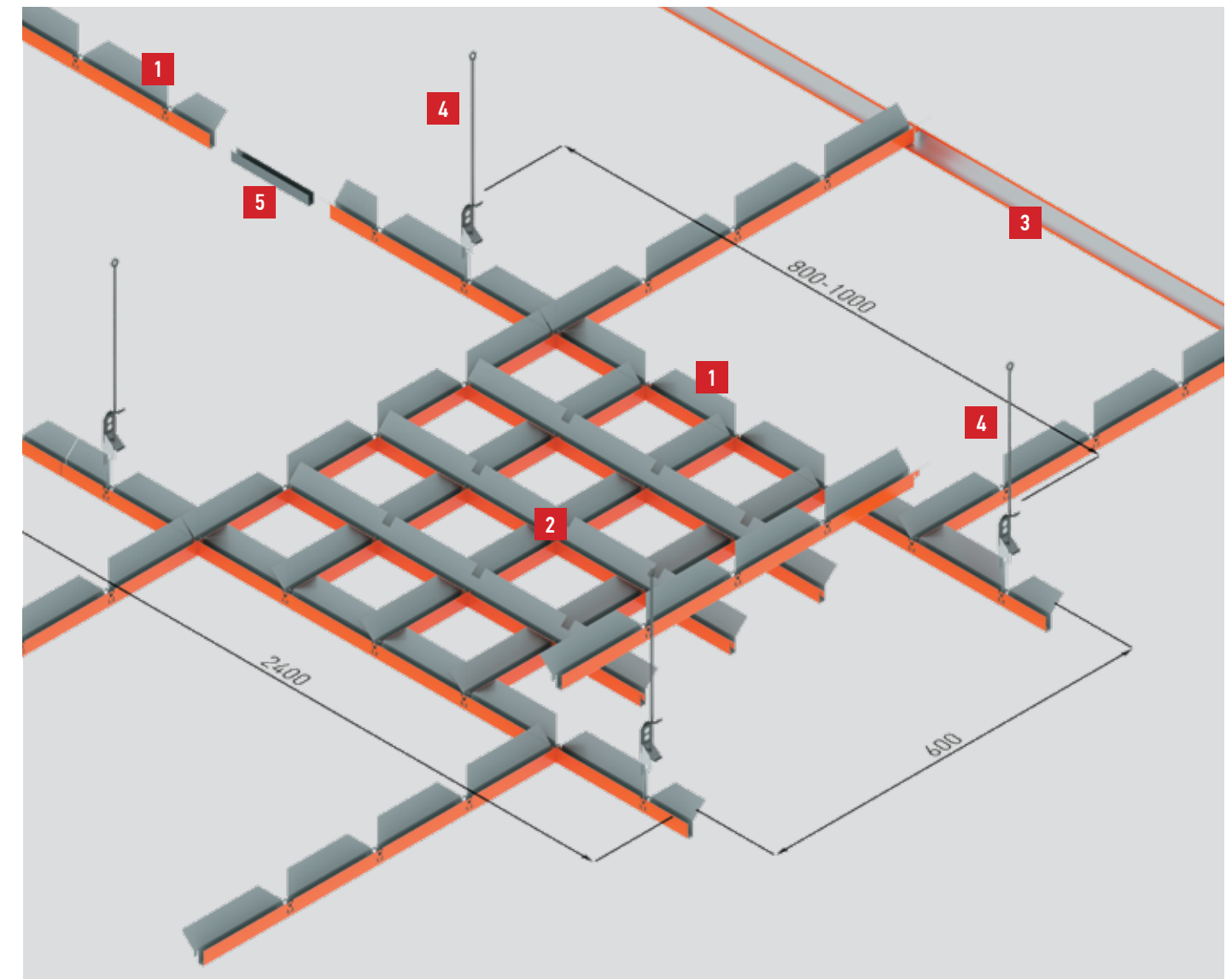
Availability under the order

Calculation of components for 1 m² of a ceiling from a pyramidal gilyato

Name	Units	75x75	86x86	100x100	120x120	150x150	200x200
Gilyato module 600x600 mm	pcs	2,78	2,78	2,78	2,78	2,78	2,78
Bottom profile 600 mm	pcs	19,46	16,68	13,9	11,12	8,34	5,56
Top profile 600 mm	pcs	19,46	16,68	13,9	11,12	8,34	5,56
Main profile gilyato 2400 mm	pcs	0,7	0,7	0,7	0,7	0,7	0,7
Longitudinal profile gilyato 600 mm	pcs	2,78	2,78	2,78	2,78	2,78	2,78
Connecting element	pcs	0,7	0,7	0,7	0,7	0,7	0,7
Gilyato hanger, step 1000 mm	set	1,68	1,68	1,68	1,68	1,68	1,68
Wall-mounted L-profile 3000 mm	pcs	≈ 0,216 <i>An accurate calculation of the wall L-profile is recommended if you know the perimeter of the room</i>					



Installation diagram of a pyramidal gilyato



- 1 Gilyato main profile 2400 mm long
- 2 Gilyato module (consists of lower and top profiles with a length of 600 mm)
- 3 Wall-mounted L-profile, length 3000 mm
- 4 Gilyato suspension
- 5 Connecting piece for main profiles 2400 mm long

Useful tips when installing a pyramidal gilyato

- ① Only metal dowels should be used for attaching the hangers. Do not use plastic dowels.
- ① Recommended distance between hangers is 800 mm. The maximum distance between hangers is 1000 mm.
- ① Any additional utilities should have separate ceiling mounts.
- ① The distance between the main gilyato profiles of 2400 mm is 600 mm.
- ① Any lamps, except for KRAFT G-Led, must have separate suspensions.
- ① The installation of any gilyato should be given to trusted specialists.



Grilyato GLK: 15/15 та 15/10



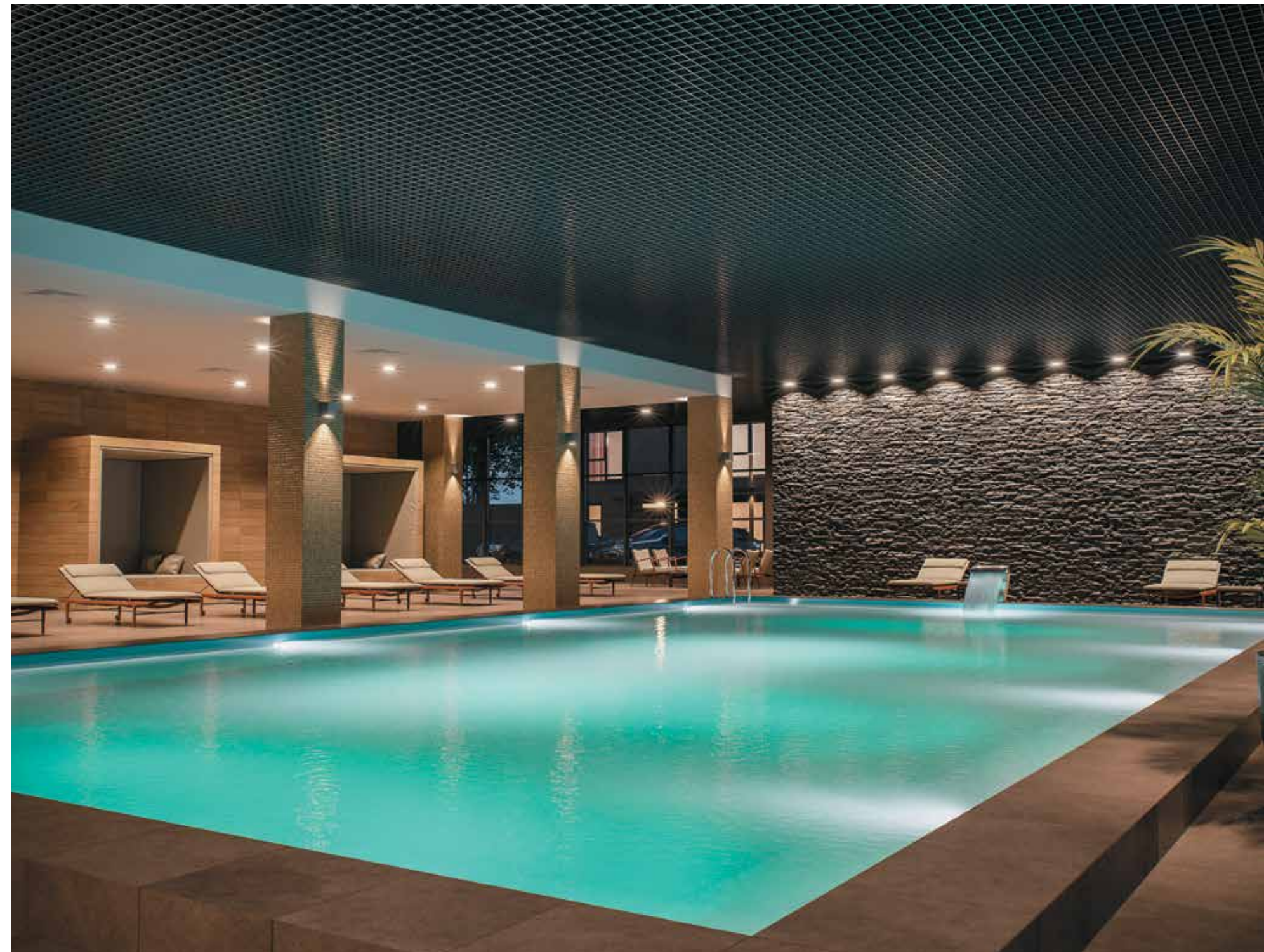
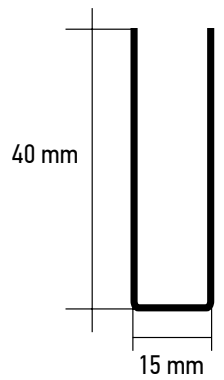
Grilyato GLK is a cassette (modular) type ceiling. In appearance, it almost does not differ from the classic grilyato, but it has undeniable advantages during installation and operation. The grilyato ceiling GLK is mounted on a classic frame made of the T-15 profile. But instead of plates, 600×600 mm grilyato GLK modules are installed in the supporting frame. Thanks to the T-profile frame, the strength of the GLK grilyato is higher than that of the classic grilyato. In addition, the cassette can be easily removed from the frame, providing easy access to utilities.

Grilyato GLK is fully compatible with other KRAFT products, including KRAFT LED lighting systems.

We produce two modifications of the GLK grilyato: 15/15 and 15/10. What is the difference?

The GLK 15/15 cassette has a framing profile. The thickness of the grilyato profile and the Fortis T-profiles is 15 mm.

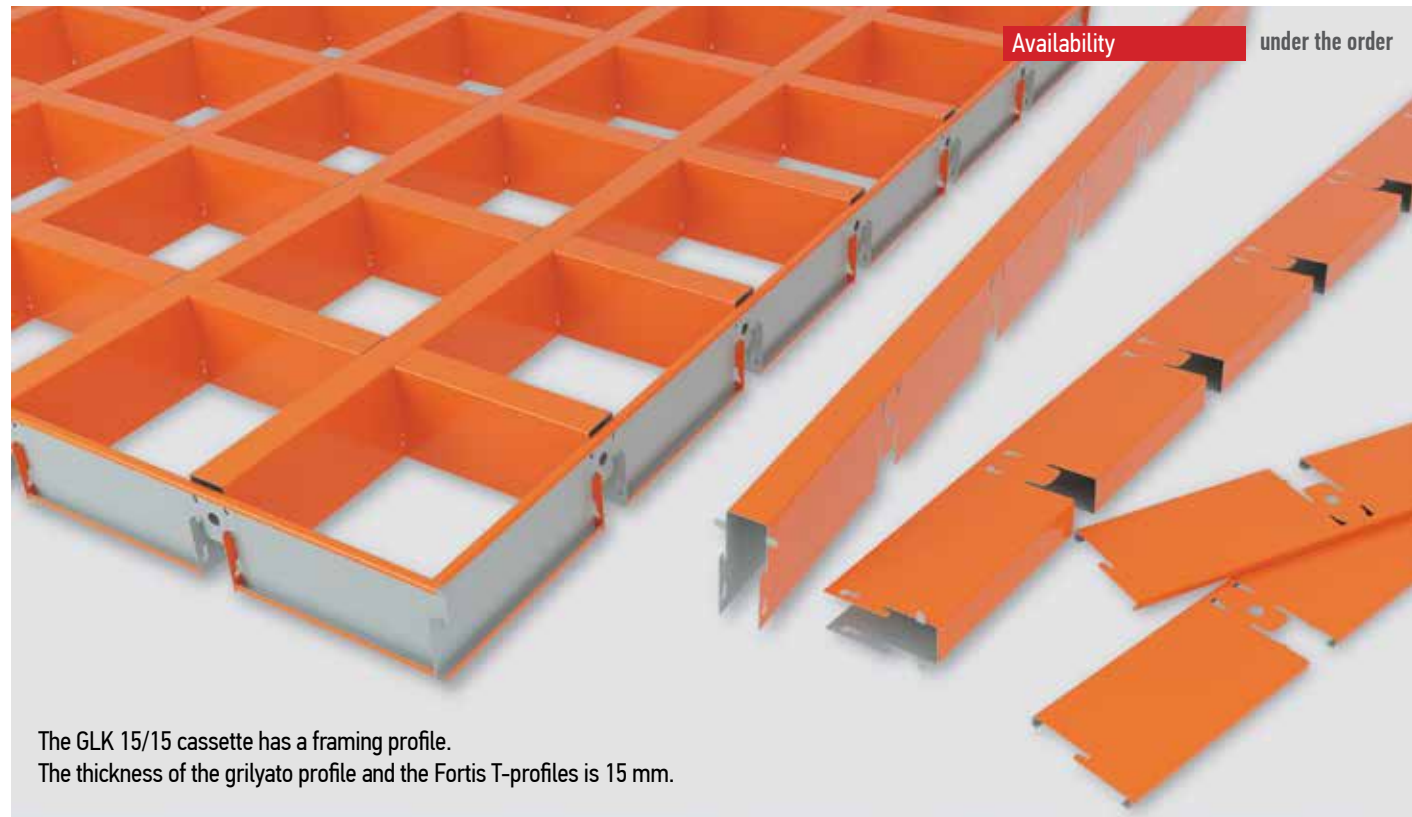
The GLK 15/10 cassette does not have a framing profile. The thickness of the grilyato profile is 10 mm, the thickness of the Fortis T-profiles is 15 mm.



General characteristics



Colors				
Profile width		<td>Profile height</td> <td> </td>	Profile height	
Cell size, mm	50×50, 60×60, 75×75, 86×86, 100×100, 120×120, 150×150, 200×200			
Material	galvanized steel with polymer coating			
Fire safety	class A1	Warranty, years		



Availability under the order

The GLK 15/15 cassette has a framing profile.
The thickness of the grilyato profile and the Fortis T-profiles is 15 mm.

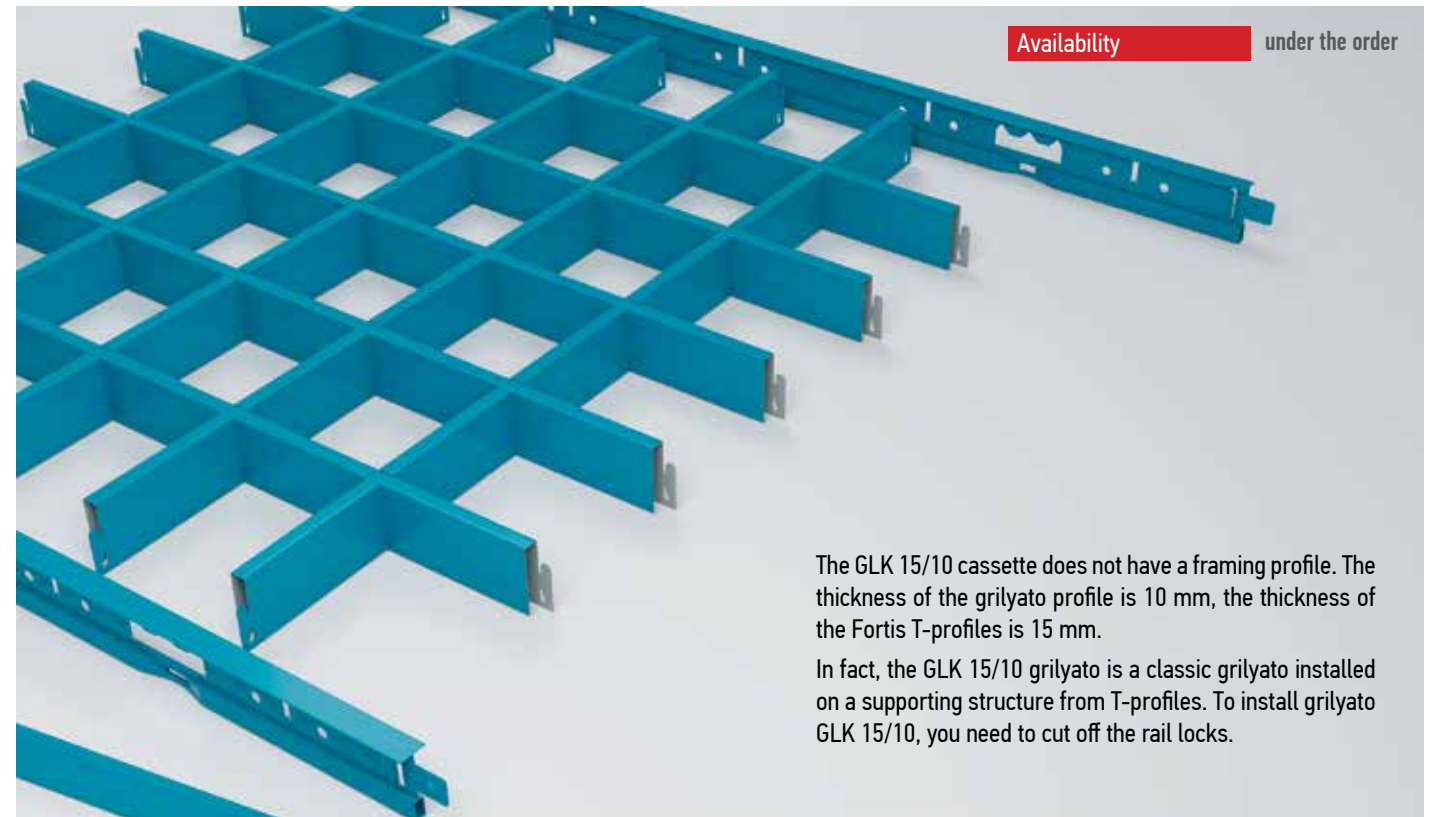
Appearance



General characteristics



Colors				
Profile width		<td>Profile height</td> <td> </td>	Profile height	
Cell size, mm	50×50, 60×60, 75×75, 86×86, 100×100, 120×120, 150×150, 200×200			
Material	galvanized steel with polymer coating			
Fire safety	class A1	Warranty, years		



Availability under the order

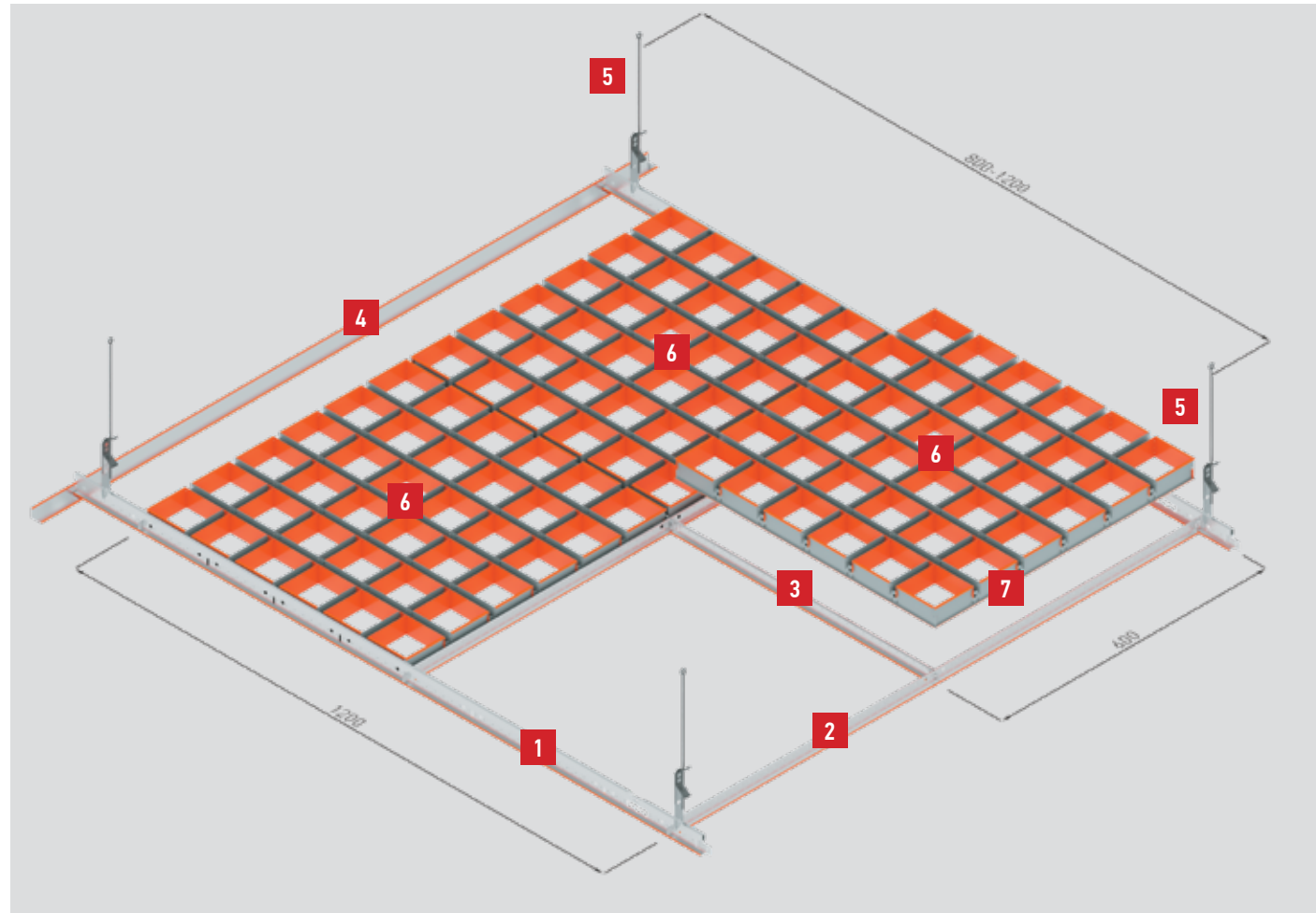
The GLK 15/10 cassette does not have a framing profile. The thickness of the grilyato profile is 10 mm, the thickness of the Fortis T-profiles is 15 mm.

In fact, the GLK 15/10 grilyato is a classic grilyato installed on a supporting structure from T-profiles. To install grilyato GLK 15/10, you need to cut off the rail locks.

Appearance



Installation diagram grilyato GLK



- 1** Main T-profile 3600 mm long
- 2** Cross T-profile 1200 mm long
- 3** Longitudinal T-profile 600 mm long
- 4** Wall-mounted L-profile, length 3000 mm
- 5** Grilyato suspension GLK
- 6** Grilyato module GLK 15/15 or 15/10 (consists of lower and top profiles 600 mm long)
- 7** Grilyato module framing profile GLK 15/15

Calculation of components for 1 m² of grilyato ceiling GLK 15/15 and GLK 15/10

Name	Units	50x50	60x60	75x75	86x86	100x100	120x120	150x150	200x200
Grilyato module GLK 15 600x600 mm	pcs	2,78	2,78	2,78	2,78	2,78	2,78	2,78	2,78
Bottom profile 600 mm	pcs	30,58	25,02	19,46	16,68	13,9	11,12	8,34	5,56
Top profile 600 mm	pcs	30,58	25,02	19,46	16,68	13,9	11,12	8,34	5,56
End profile 600 mm*	pcs	11,12	11,12	11,12	11,12	11,12	11,12	11,12	11,12
Main profile T-15 3600 mm	pcs	0,464	0,464	0,464	0,464	0,232	0,232	0,232	0,232
Longitudinal profile T-15 1200 mm	pcs	—	—	—	—	1,4	1,4	1,4	1,4
Cross section T-15 600 mm	pcs	2,8	2,8	2,8	2,8	1,4	1,4	1,4	1,4
Grilyato suspension GLK, step 1000 mm	set	1,4	1,4	1,4	1,4	0,7	0,7	0,7	0,7
Wall-mounted L-profile 3000 mm	pcs	≈ 0,216 An accurate calculation of the wall L-profile is recommended if you know perimeter of the room							

* Only for grilyato GLK 15/15



Features of mounting grilyato GLK

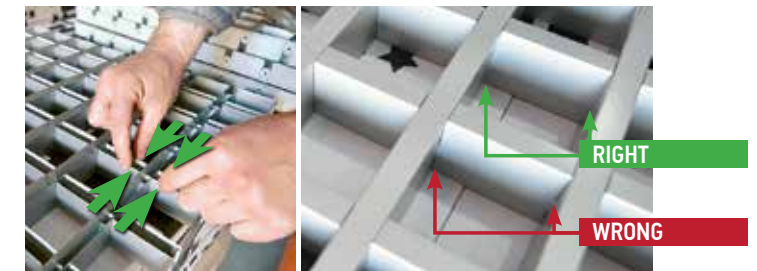
1. Use special suspensions

To fasten the frame from the T-profile, use special hangers. Installation of suspensions should be carried out at the intersection of T-profiles so that suspensions do not interfere with the installation of GLK grilyato cassettes.



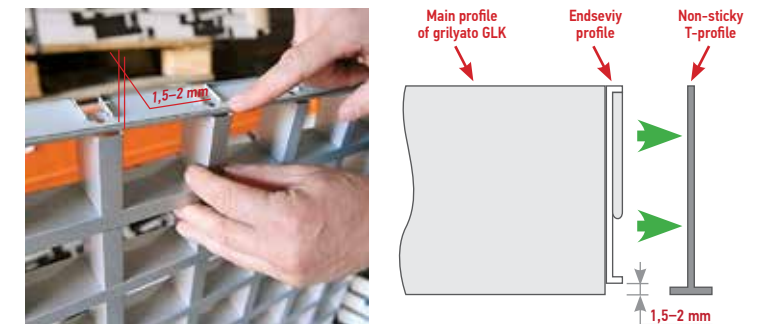
2. Check the locks of the upper and lower profiles

After assembling the cassette, it is necessary to check that the locks of the top and lower grilyato profiles are fully engaged. To do this, squeeze the bottom profile ("mother") on both sides of the lock with a little effort. If the lock was not closed, then you will hear a characteristic click and the profile will fall into place. In a properly assembled GLK grilyato cassette there should be no visible gaps between the profiles.



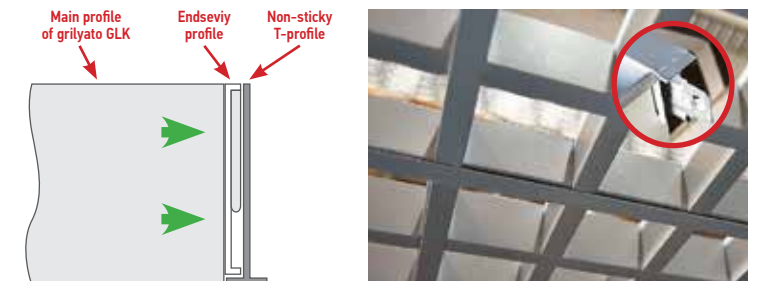
3. Check the locks of the end profile

The next step is to check the correct fastening of the end profile locks. If the lock is closed correctly, then the main profile should protrude 1.5-2 mm beyond the framing one. This gap is necessary to compensate for the thickness of the T-profile. The framing profile rests on the bearing T-profile and the grilyato plane is flush with the plane of the bearing T-profile.



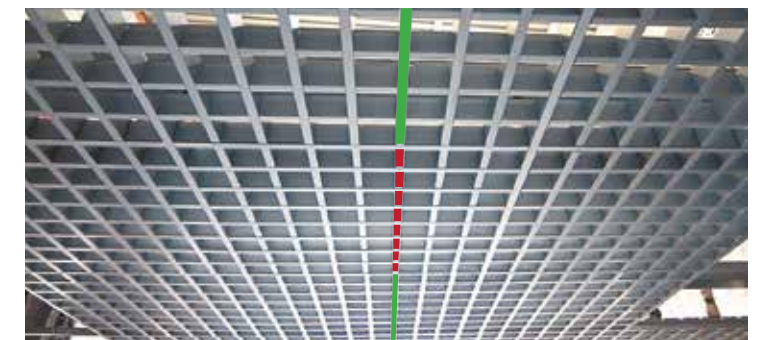
4. Make sure the cassette is properly secured

The grilyato cassette should rest against the T-profile and stand on the "spacer" of the supporting structure. The cassette has a slight backlash, so after installation it is enough just to move it a little until the trozt profile hits the seats. A small gap between the cassette and the T-profile is permissible at the joints of the transverse T-profiles, since the 600 mm profiles have a stamped lock.



5. Check the correct position of the cassettes

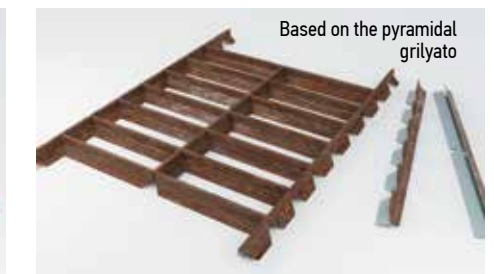
To create a one-piece effect, all grilyato cassettes must be aligned towards the bottom grilyato profile (mama). All lower grilyato profiles should be directed parallel to the supporting T-profile.



Useful tips when installing grilyato GLK

- ① Only metal dowels should be used for attaching the hangers.
- ① Distance between main T-profiles 3600 mm is 1200 mm.
- ① Recommended distance between hangers is 800 mm. The maximum distance between hangers is 1200 mm.
- ① Any additional devices, except for the KRAFT G-Led, must have separate suspensions.

Grilyato louvers



General characteristics



	RAL 9003	RAL 9005	RAL 9006	RAL 7024	RAL 8017	Any RAL	Wood
Colors							
Profile width	→ 15 mm ←		Profile height		U 40 mm		
Cell size, mm	100x300, 100x600 and other			Availability		under the order	
Material	galvanized steel with polymer coating						
Fire safety	class A1			Warranty, years		3	

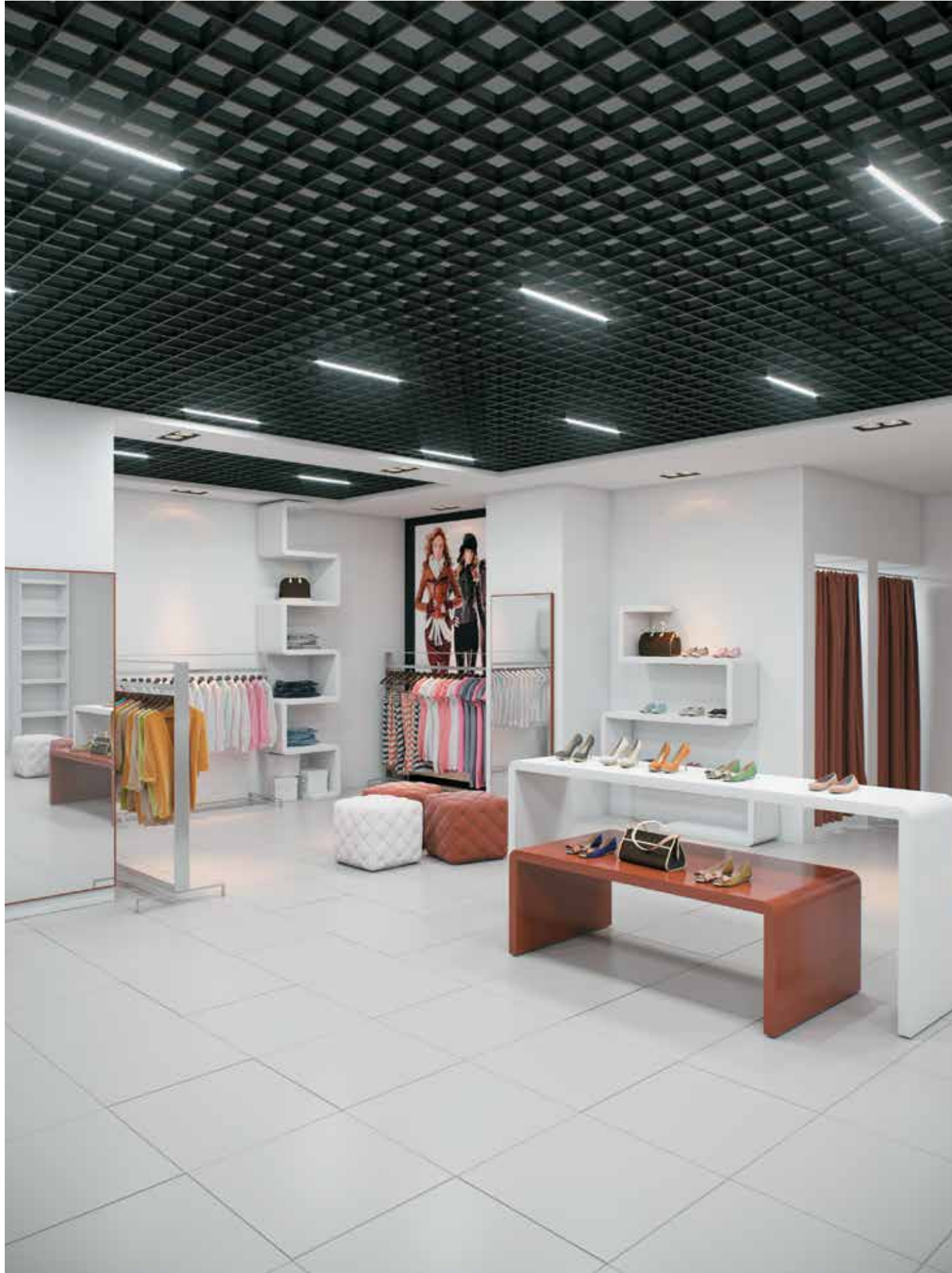
The louvers in grilyato are not square, but rectangular. This effect is achieved by skipping individual guides in the common array.

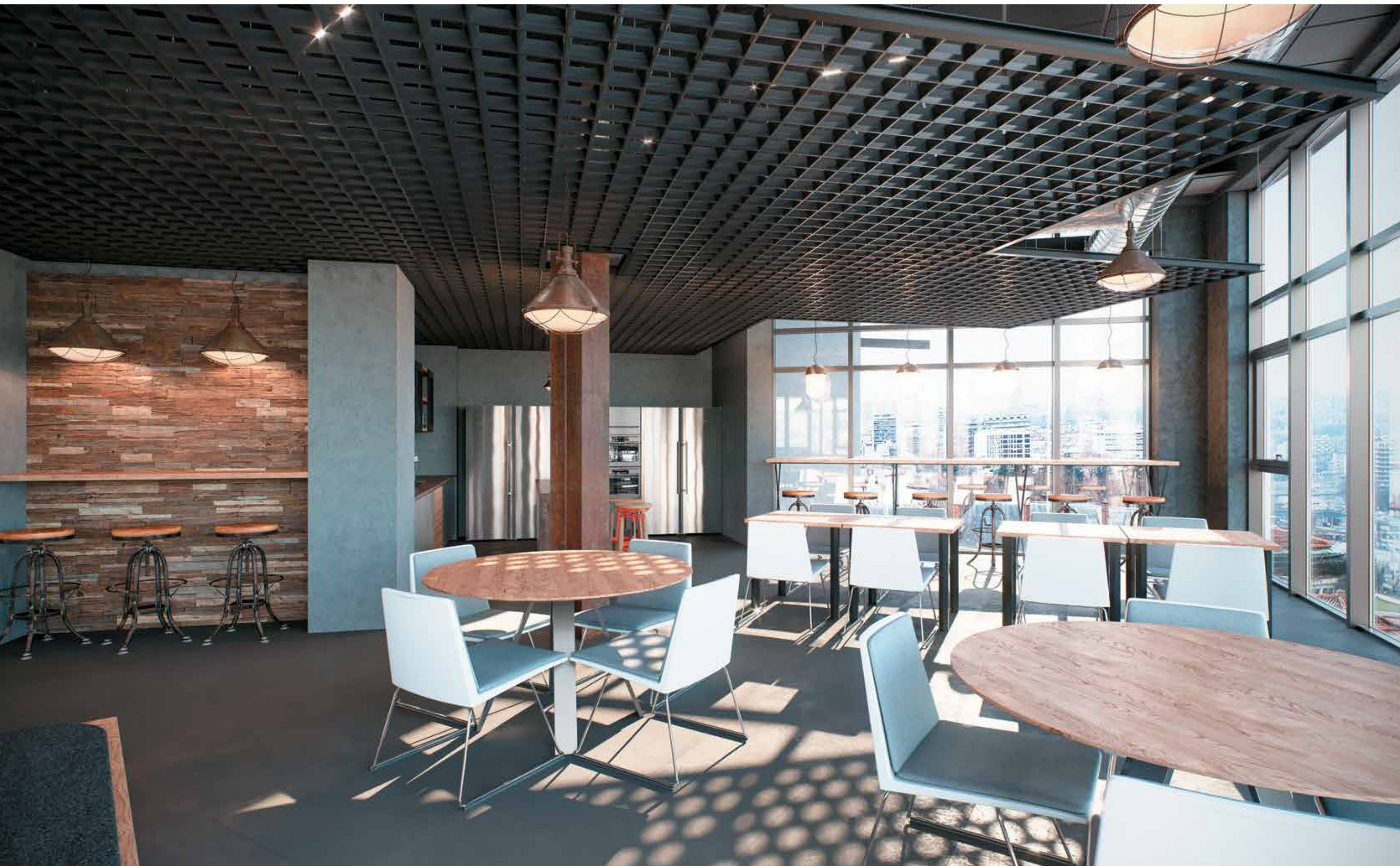
The louvers effect can be achieved with any kind of KRAFT grilyato — classic, pyramidal, GLK. But the best results are obtained when using grilyato GLK (modular system), since the supporting frame made of T-profiles gives the necessary strength. Grilyato blinds have an original appearance and can be combined with any other types of grilyato.

Grilyato louvers are made to order.







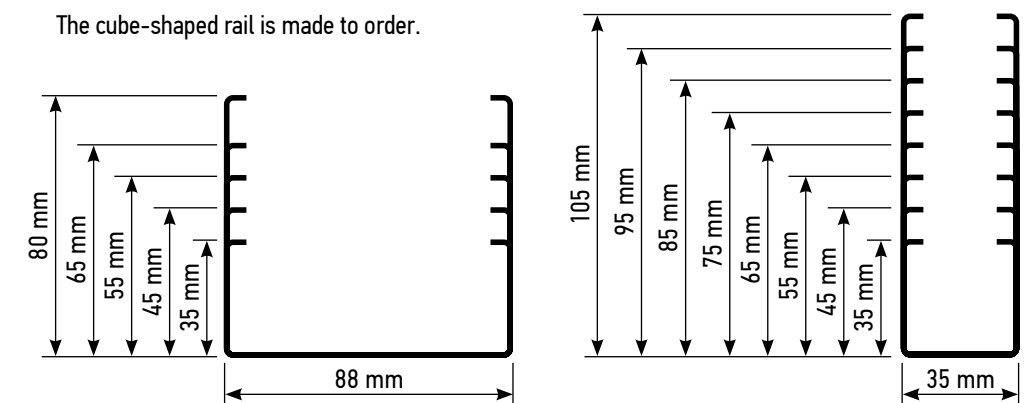


Cuboid rail KRAFT³ (Kraft Cube)



This new design solution allows you to significantly lengthen or expand any room. Thanks to the assortment of sizes and a wide palette of colors, using the KRAFT³ rail, you can create a huge number of original design solutions. The excellent functional characteristics of the structure are due to the strong connection of the cuboid profile with the supporting beam.

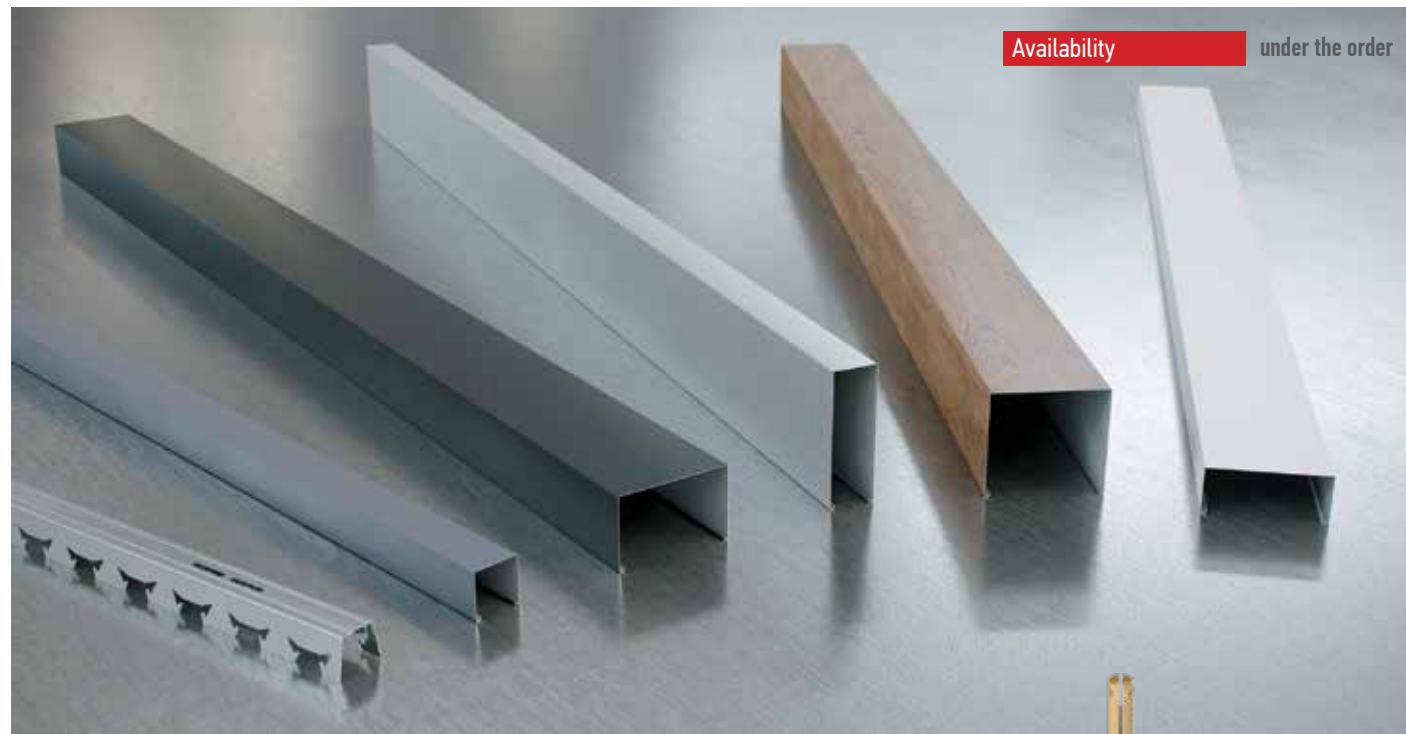
The cube-shaped rail is made to order.



General characteristics



Colors	RAL 9003	RAL 9005	RAL 9006	RAL 7024	RAL 8017	Any RAL	Wood
Rail width, mm	35		Rail height, mm U↕ 35, 45, 55, 65, 75, 85, 95, 105				
Rail width, mm	88		Rail height, mm U↕ 35, 45, 55, 65, 80				
Rail step	multiple of 52 mm						
Material	galvanized steel with polymer coating						
Fire safety	class A1		Warranty, years		3		



Availability under the order

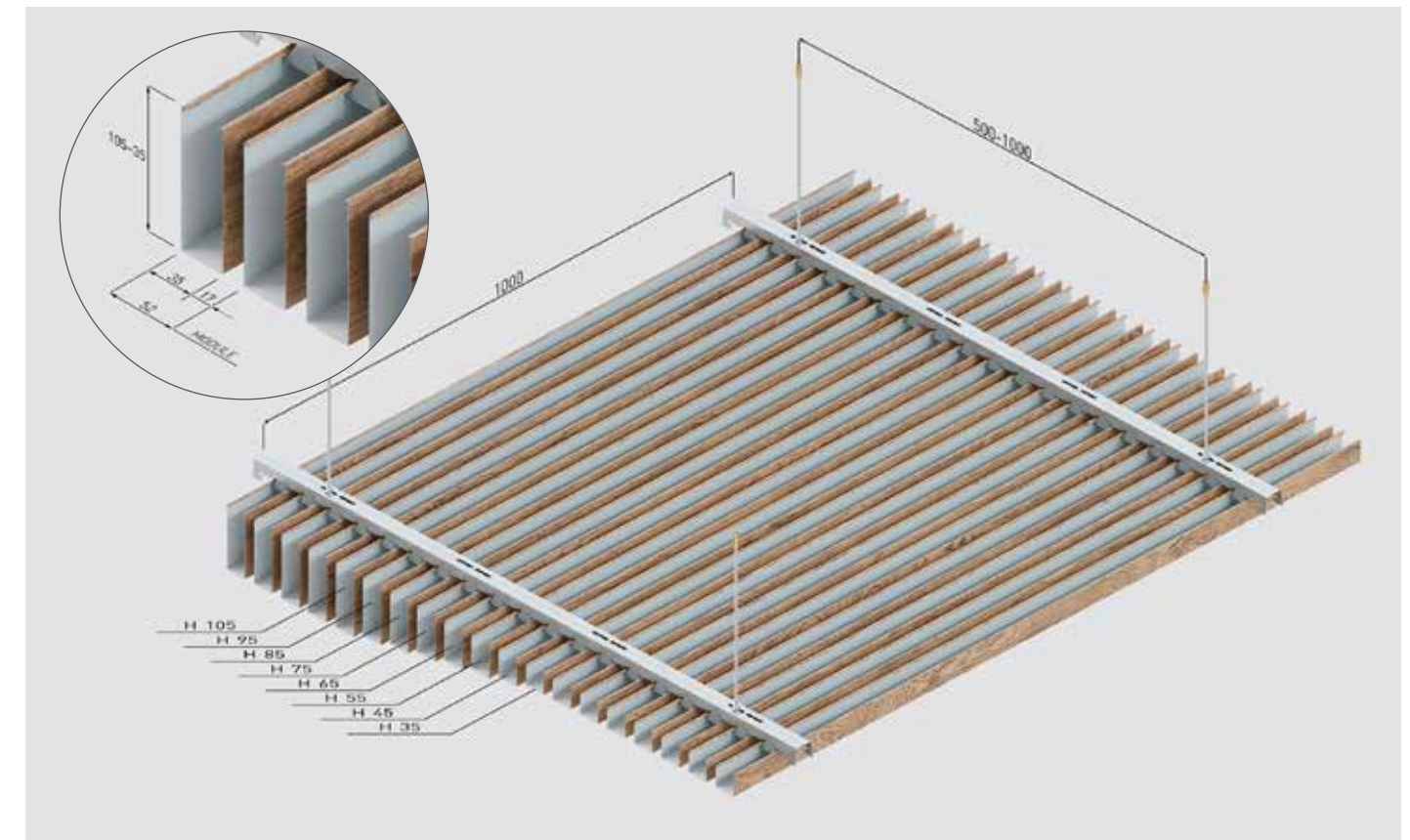
Universal traverse for plate rail ceilings



Calculation of components for 1 m² of a ceiling from a cuboid rail

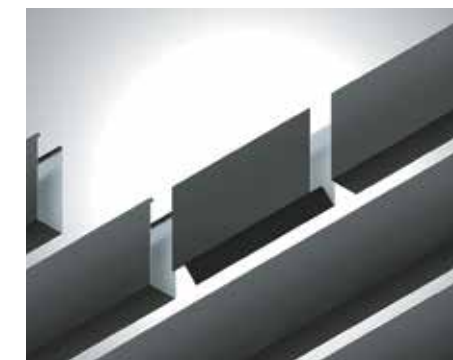
Module	mm	52	104	156	208	260	312
Width 35 mm	r.m.	20	10	6,67	5	4	3,35
Width 88 mm	r.m.	—	10	6,67	5	4	3,35
Suspension	psc	1,5	1,25	1,25	1,25	1	1
Traverse 3900 mm	psc	0,32	0,32	0,32	0,32	0,32	0,32

Installation diagram of a cuboid rail



Additional accessories for cuboid rail ceiling

Rail connector



Individual rail mounting



This mounting has several advantages over the traverse mounting:

- you can place the rail anywhere on the ceiling or wall;
- installation of rails at different angles to each other is possible;
- you are not "tied" to the traverse module;
- saving free space — no hangers and traverse are needed.

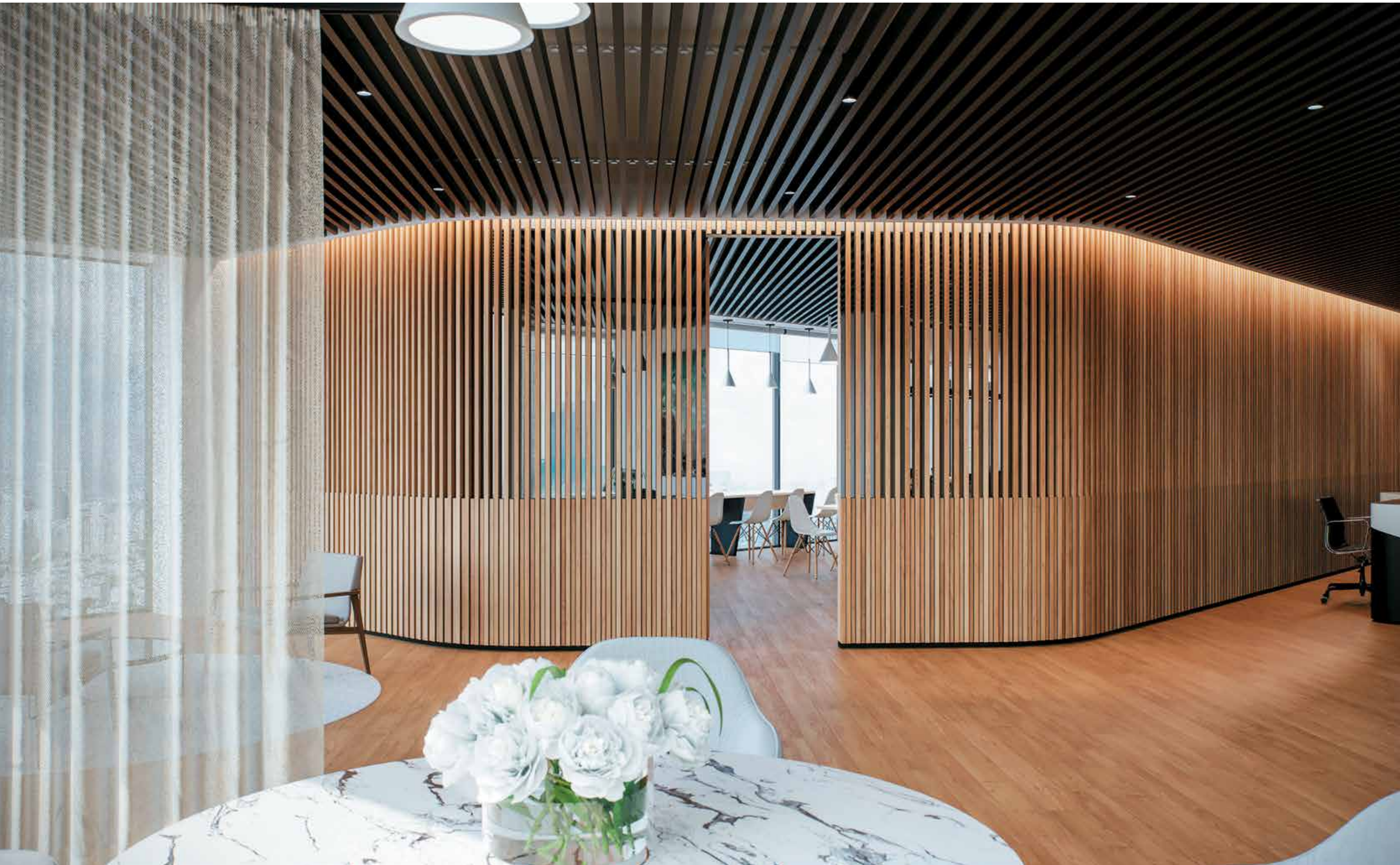
Rail cap



Flexible traverse

With the help of a flexible traverse, the rail can be positioned along a curved path. This feature allows you to significantly expand the possibilities of design solutions in plate rail ceilings. The flexible traverse KRAFT is a load-bearing structure and is attached to the ceiling using standard hangers. The traverse easily bends by hand and holds its shape perfectly.









Lamellar rail blinds (screen ceiling)



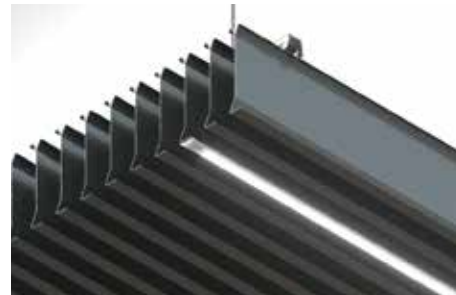
This type of suspended ceiling is also called "screen" or "plate". Structurally, the ceiling consists of vertical plates fixed to the load-bearing traverse. The original plate fastening system allows to significantly reduce the installation time, and also provides easy access to utilities in the ceiling space.

Multi-level solutions with different plate spacing provide unlimited design possibilities and can personalize any room.

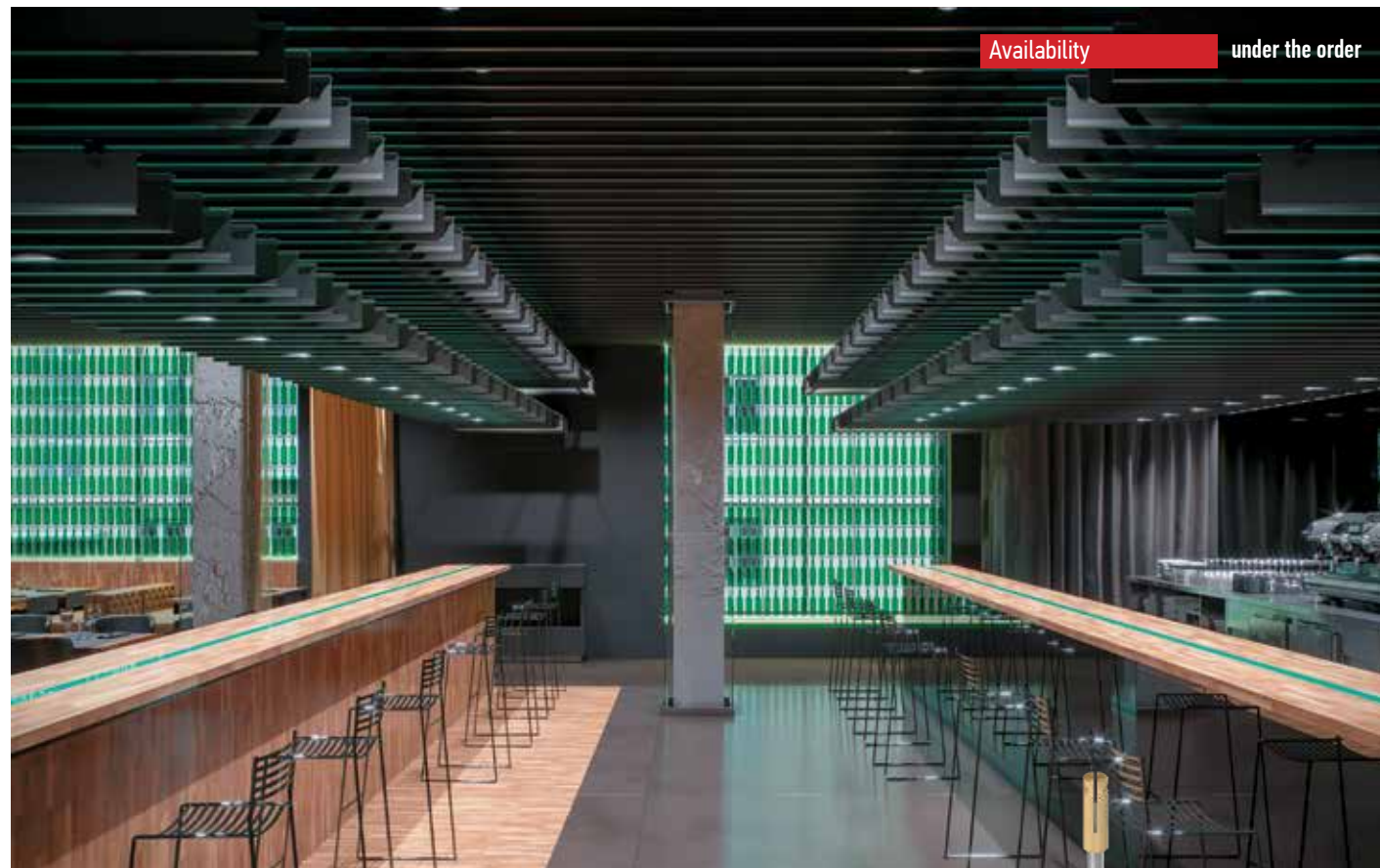
The lamellar rail is made to order.



General characteristics

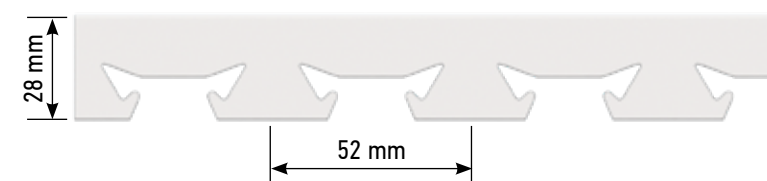


Colors	
Rail height	100–105 mm
Rail step	multiple of 52 mm
Material	galvanized steel with polymer coating
Fire safety	class A1
Warranty, years	3



Availability under the order

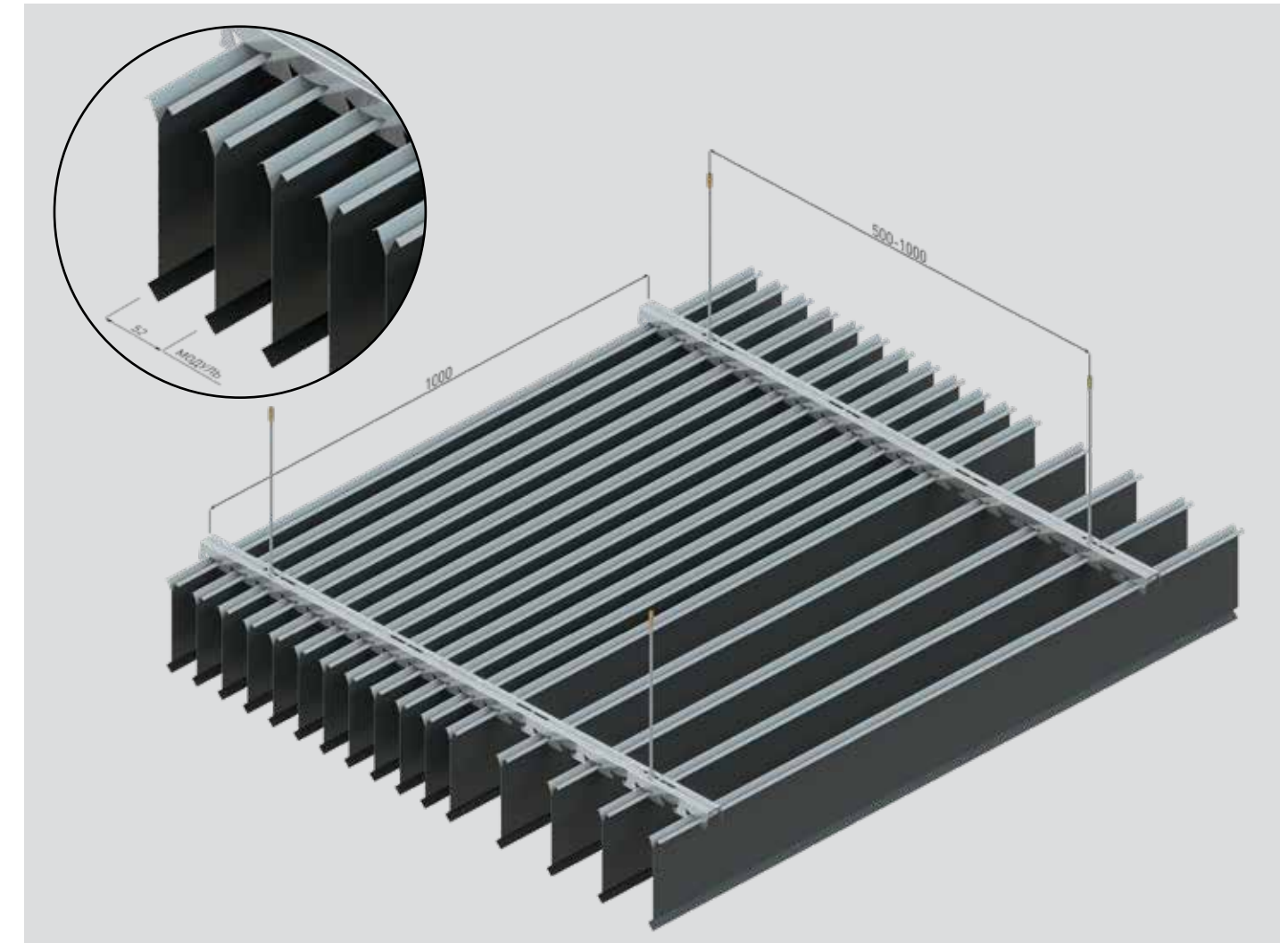
Universal traverse for plate rail ceilings



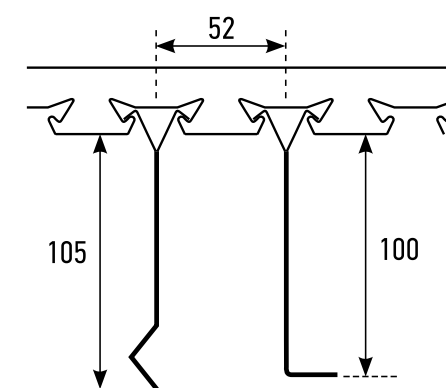
Calculation of components for 1 m² of lamellar ceiling

Module	mm	52	104	156	208	260	312
Rail	r.m.	20	10	6,67	5	4	3,35
Suspension	psc	1,5	1,25	1,25	1,25	1	1
Traverse 3900 mm	psc	0,32	0,32	0,32	0,32	0,32	0,32

Plate rail mounting scheme



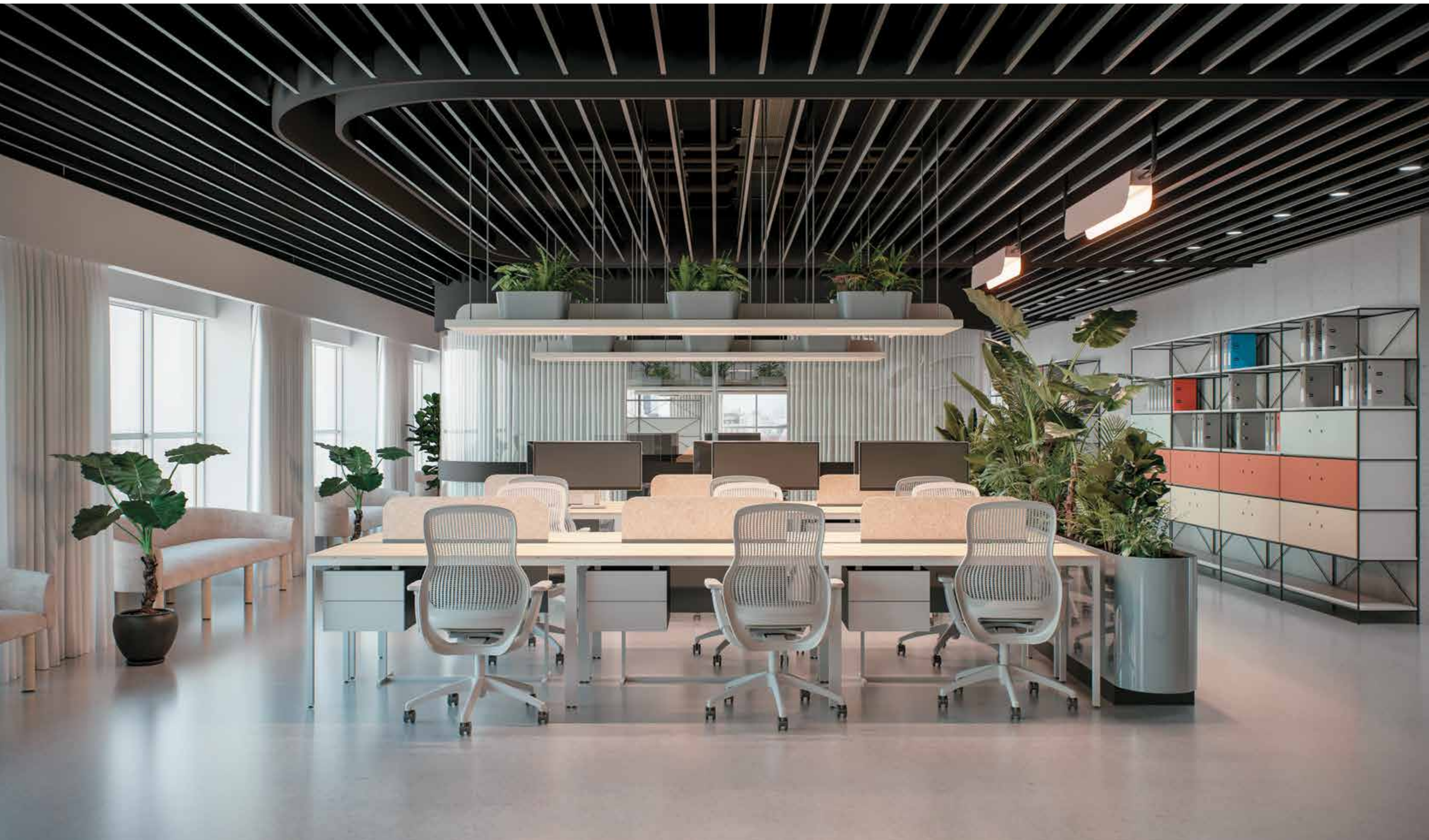
Bending configuration of the end of the plate strip



KRAFT manufactures a rail with a standard L- and Z-shaped end bend configuration. The Z-shaped bend is used in the ceiling array, the L-shaped bend is used for fixing KRAFT G-Led luminaires.







Metal cassettes KRAFT



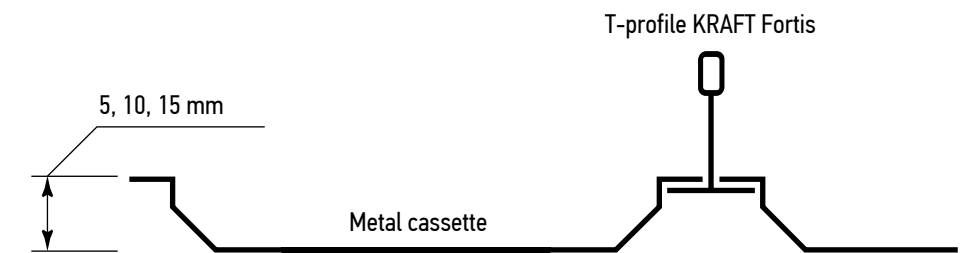
General characteristics



	RAL 9003	RAL 9005	RAL 9006	RAL 7024	RAL 8017	Any RAL	Wood
Colors							
Cassette height							
Cassette dimensions	600x600 mm			Availability under the order			
Material	galvanized steel with polymer coating						
Fire safety	class A1			Warranty, years 3			

The suspended ceiling made of metal cassettes is used with the supporting structure of the KRAFT Fortis T-profile. Thanks to the different cassette heights, you can create an original layered design for your ceiling. In addition, cassettes are easy to install and remove and do not require regular maintenance.

Arrangement of metal cassettes in a T-profile structure



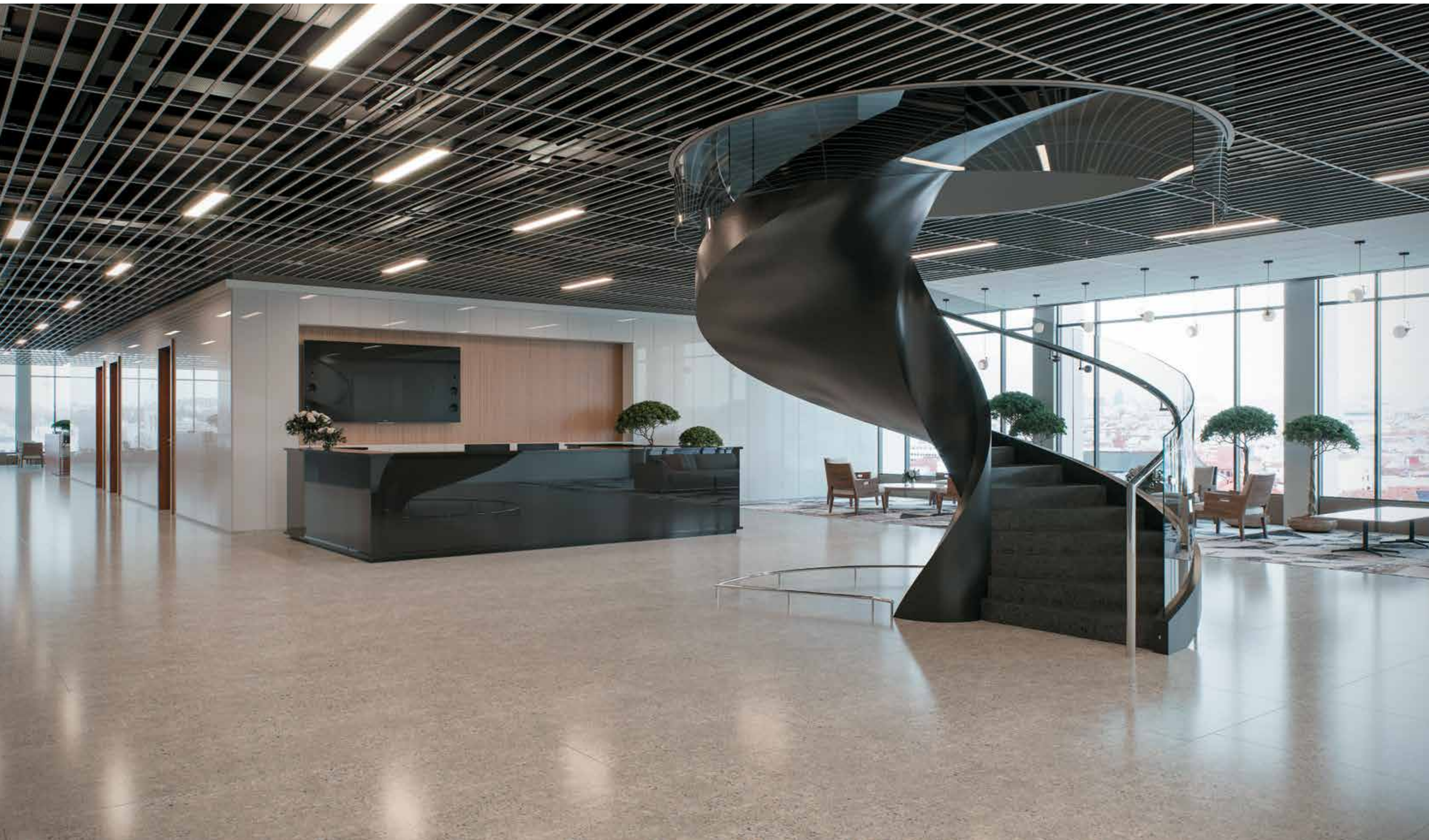
Design solutions with KRAFT ceilings

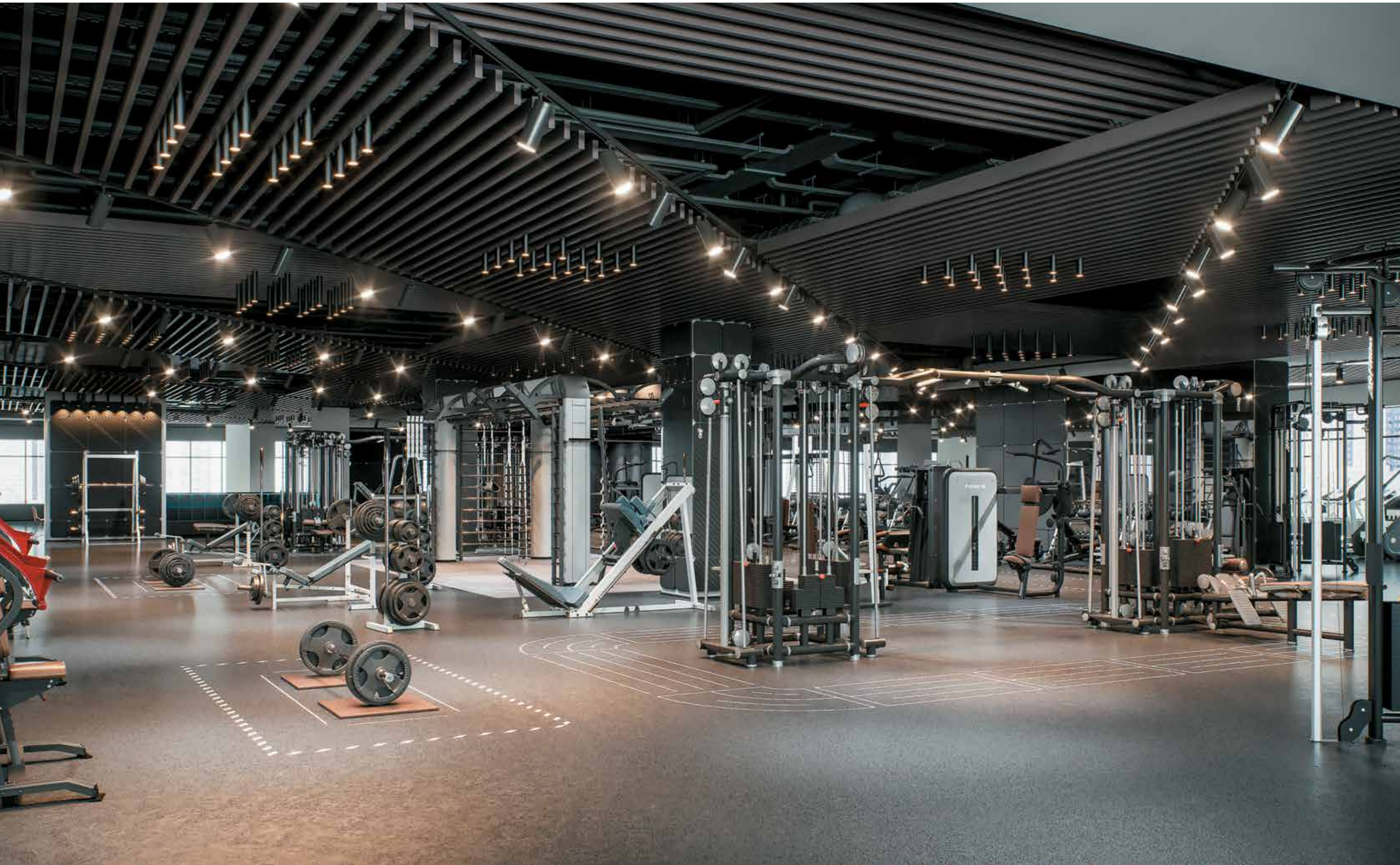


Our company has its own design department. The department's specialists monitor new trends in the suspended ceiling market and, based on the monitoring, create examples of interior design solutions using KRAFT products.

Design products include all types of grilyato, as well as cube and lamellar rail ceilings. These materials come in a variety of sizes, virtually unlimited color scale and a variety of positioning options.

You can also use several products in one room at the same time. All this makes it possible to create unique and inimitable interiors with KRAFT ceilings!

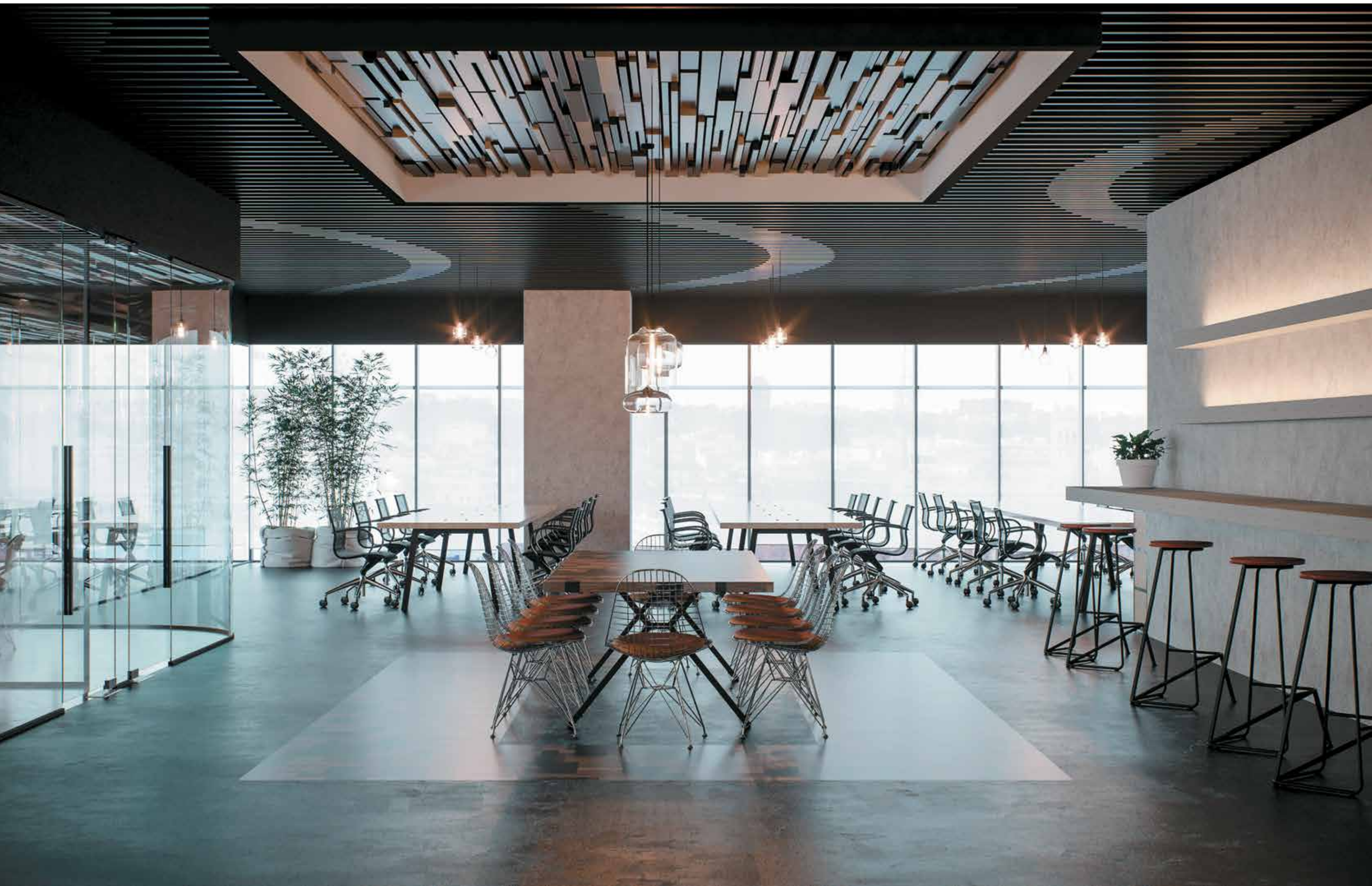












KRAFT Deckensysteme Ukraine



st. Pukhivs'ka, 4,
02000, Kiev, Ukraine

+38 (044) 363 00 65
+38 (067) 270 00 65
+38 (063) 022 00 65

kraft@kraftds.com
kraftds.com